



LUCity!

2018

Shadow and light art installation of artistic intervention for community activation commissioned site-specific artwork by '4iS - Plataforma para a Inovação Social' for 'Mercado Municipal de Santa Maria da Feira', Santa Maria da Feira, Portugal

https://instagram.com/explore/tags/lucity_marionetas_mandragora/
<http://marionetasmandragora.com/index.php?hidEv=175>



rnando vora

**Instalações
luminosas e ofi**
**Monsenhor
enVide neFeliba**
**Colectivo
Entropikalab**

ABOUT

A project co-created with the artists Gabriella Mastrangelo and Artemis Papageorgiou from Entropikalab and produced by '4iS - Plataforma para a Inovação Social'.

This is the first action of LUCity! - Light Urban City! - an artist mobility program for the creation of light installations in the public space, in co-operation with the local community, and the activation of citizens to link art and public space. In Portugal, the initiative takes place in Santa Maria da Feira (Municipal Market), with the Portuguese artist Monsenhor enVide neFelibata and the Greek collective Entropikalab.

LUCity! is funded by the Creative Europe program of the European Union and developed by 4iS - Platform for Social Innovation (Aveiro, Portugal) in partnership with House! - Society for People and Places (Maribor, Slovenia), Kirklees Theater Fund - The Lawrence Batley Theater (Huddersfield, UK) and Bass Culture (Bari, Italy). LUCity! Santa Maria da Feira is a collaboration between 4iS - Platform for Social Innovation and the City Hall of Santa Maria da Feira: Culture, Tourism, Libraries and Museums and Imaginarius Creation Center.

The LUCity! Santa Maria da Feira is a collaboration between 4iS - Platform for Social Innovation and the City Hall of Santa Maria da Feira.

My way of thinking urban art is that it will basically be and should be created for an audience rather heterogeneous and for that matter multiple readings will be perceived. Consequently, the artwork must contain different layers for these wide audiences. Sometimes even different meanings and contradictory ones are intentionally worked on top of each other. That is the beauty within, the deepness of it.

I'm not implying that urban art should be somewhat hermetic nor easily understandable. I'm affirming that it must lead to a dialogue between artist and viewer and between viewers themselves.

Fernando Távora

**Instalações
luminosas e oficinas**

Monsenhor
enVide neFelibata
Colectivo
Entropikalab











WES













LUCITY-



ART

ART DIRECTOR Monsenhor enVide neFelibata

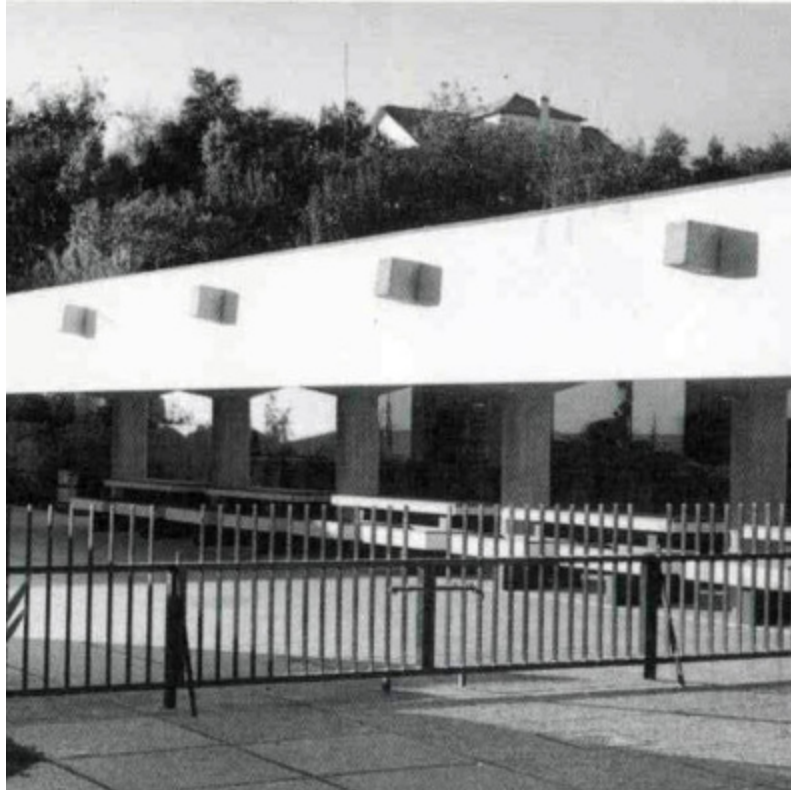
INVITED COLLECTIVE Entropikalab

PRODUCTION #4iS - Plataforma para a Inovação Social

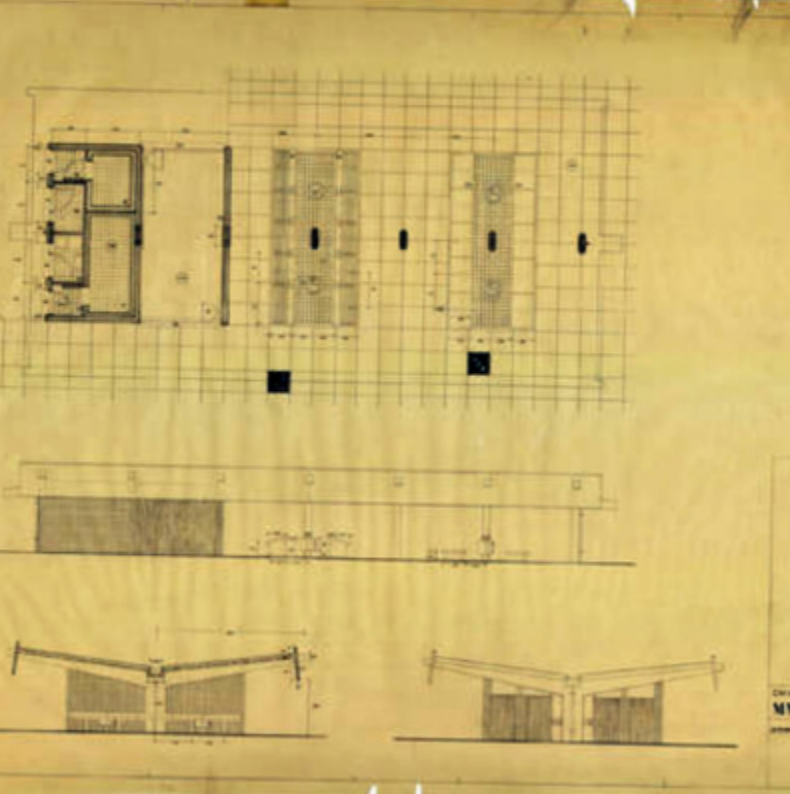
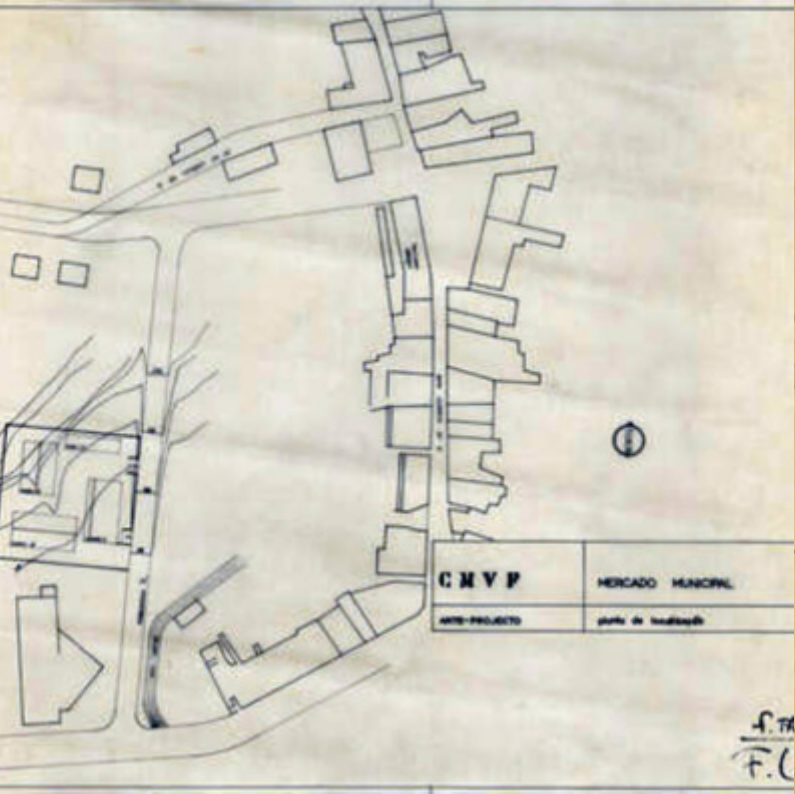
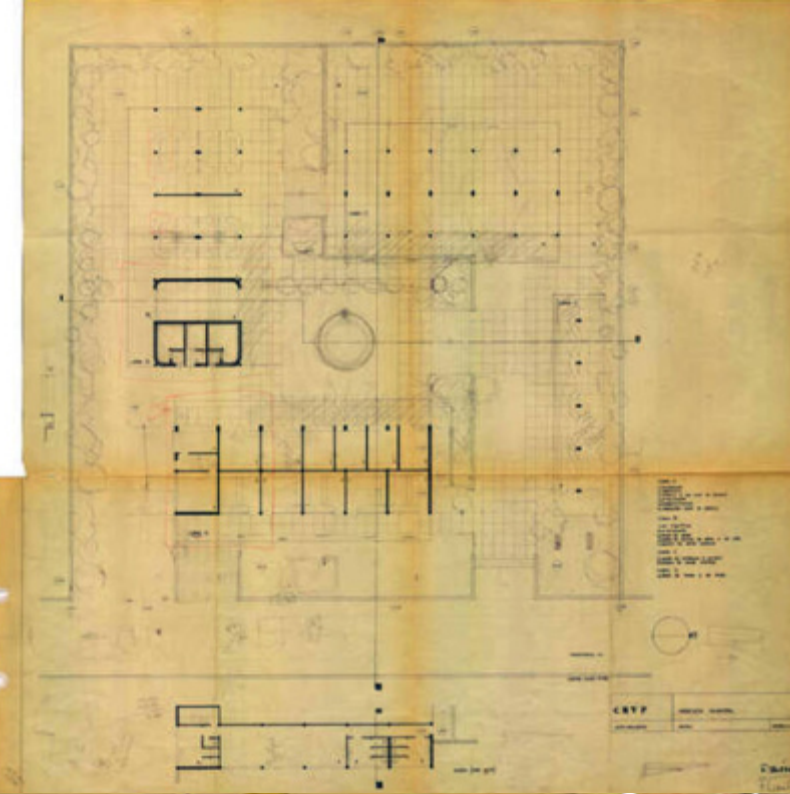
LOCAL PARTNER i9jovem

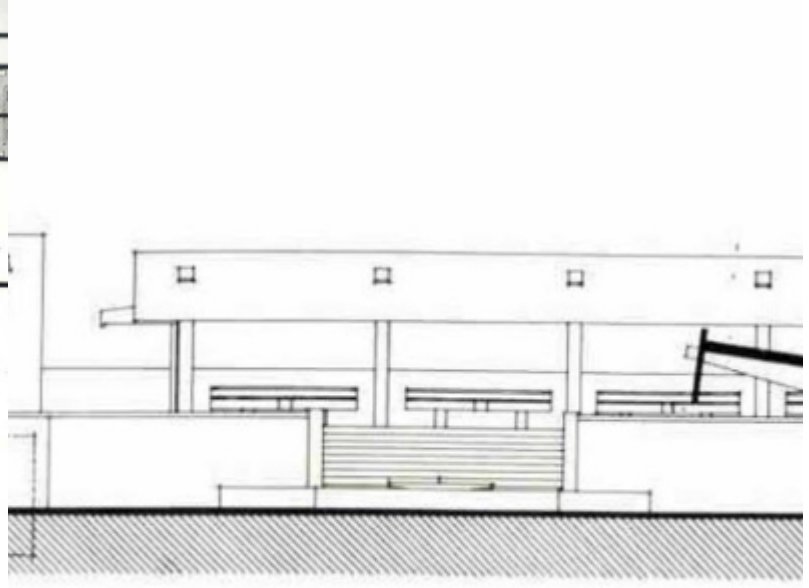
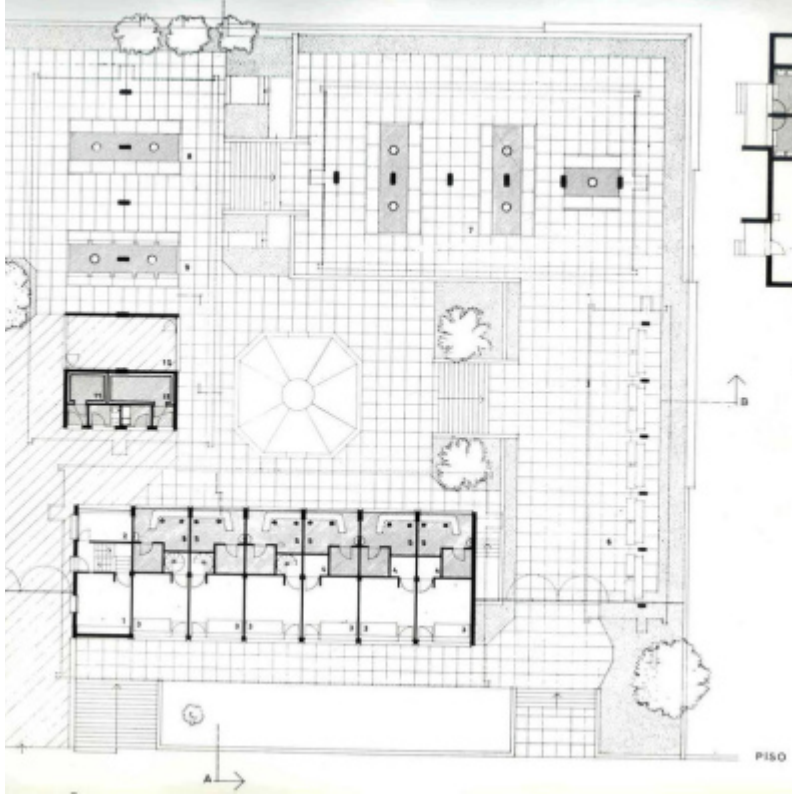
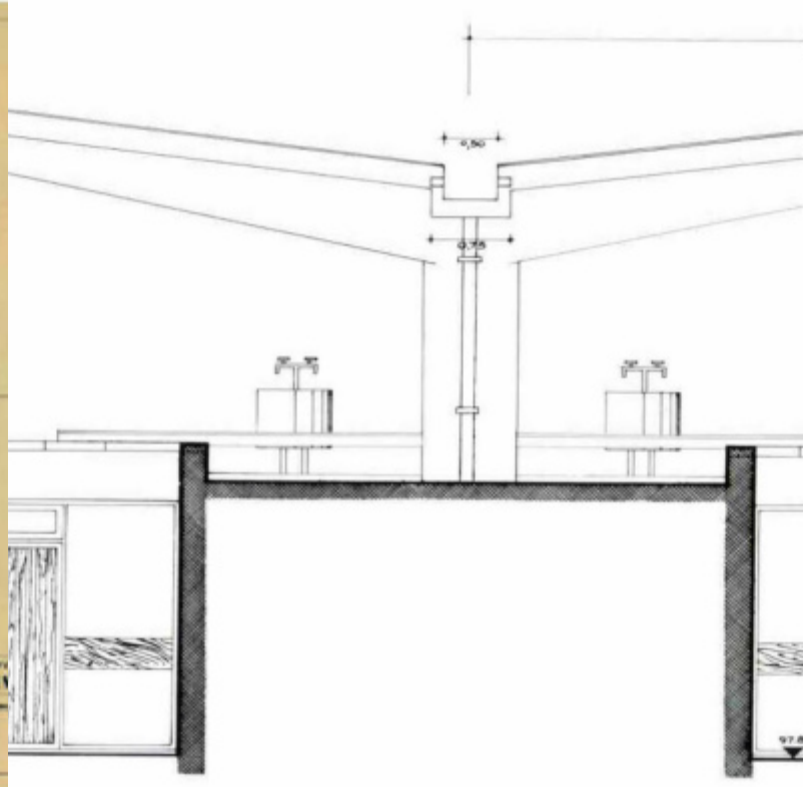
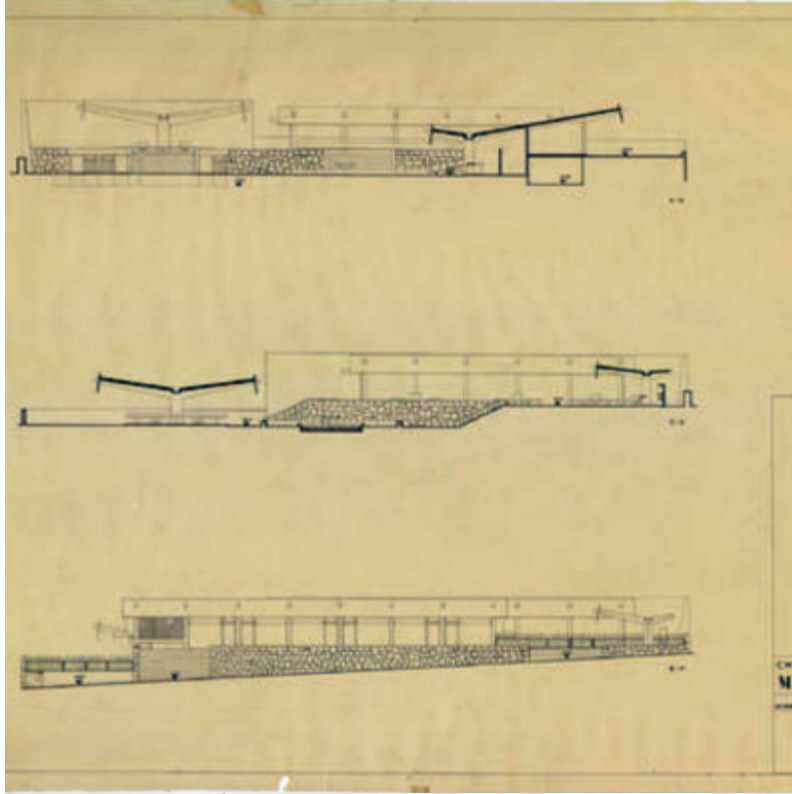
PHOTOGRAPHY AND VIDEO StoryTellers

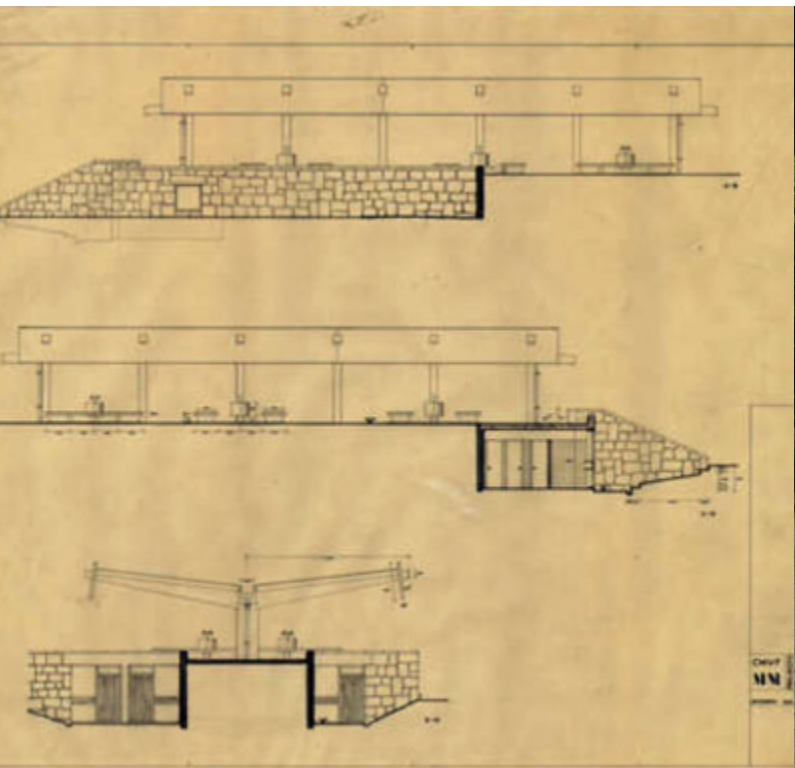
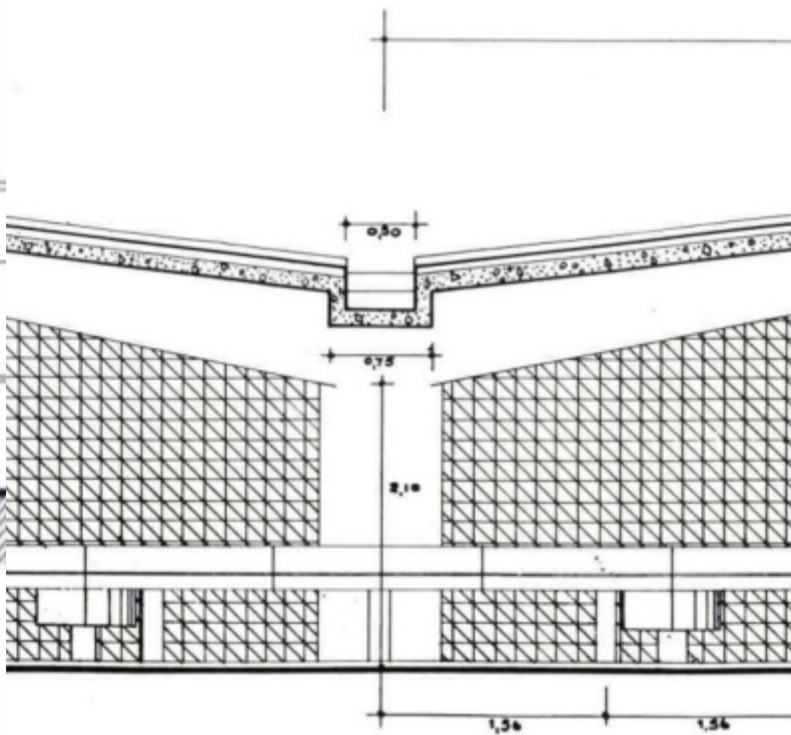
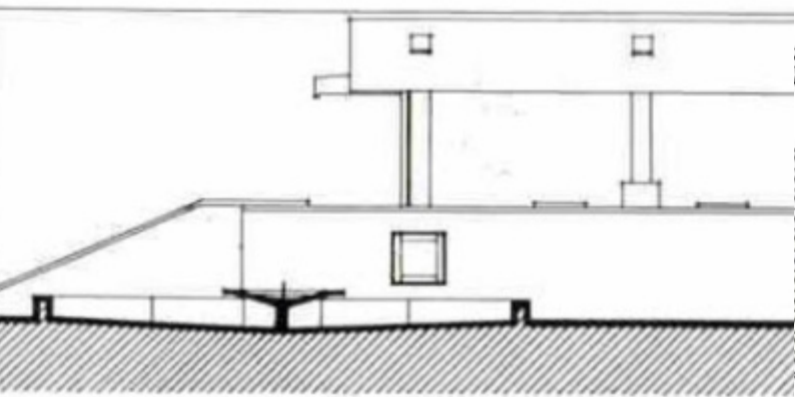
GALLERY









































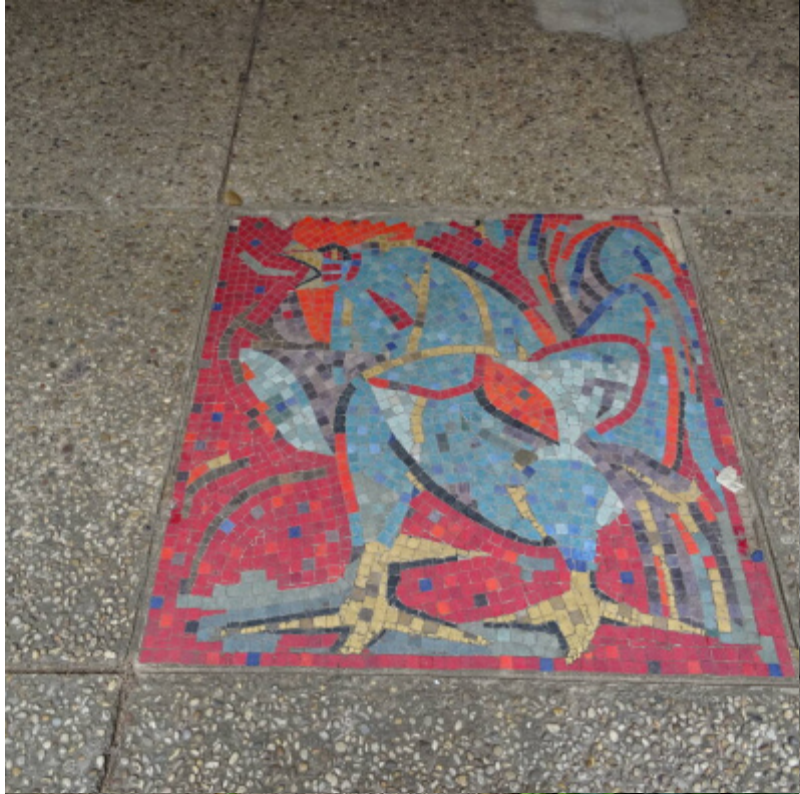




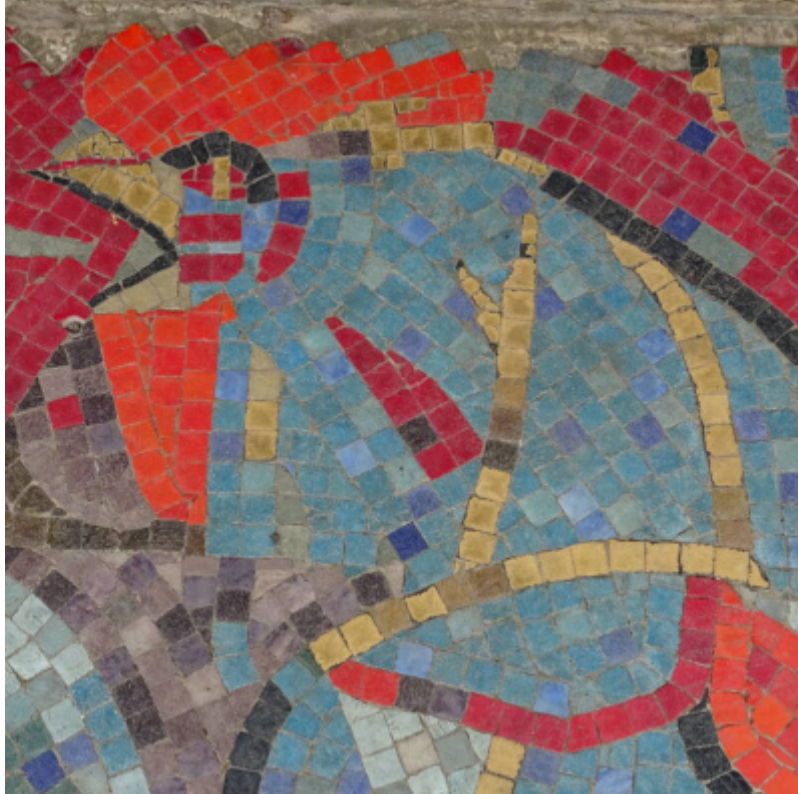


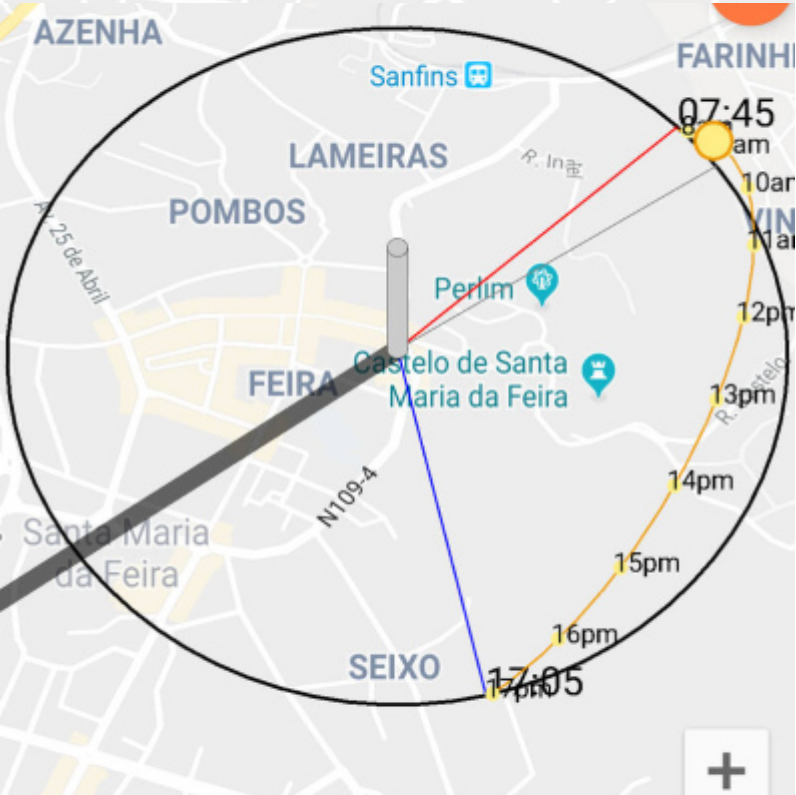
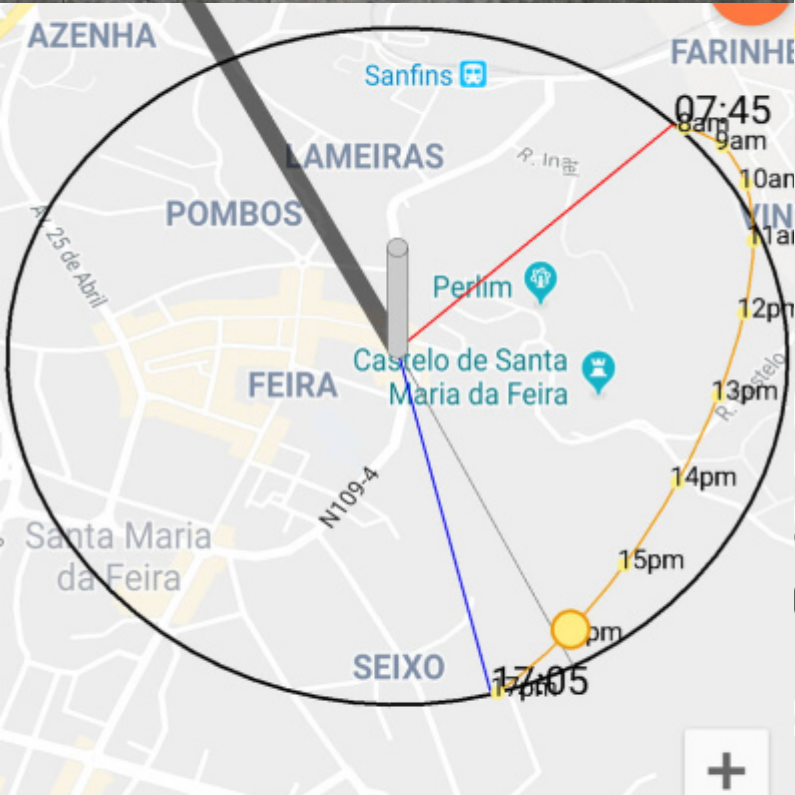














Monotype Grotesque :

typogra

Monotype Grotesque is a sans-serif typeface designed by Frank Hinman Pierpont and published through Monotype in 1926. It's an "irregular" grotesque letterforms and inconsistencies across the various styles. The family includes a wide range of widths including condensed, extra condensed and expanded versions. Monotype Grotesque went on to become the main inspiration

Frank Hinman Pierpont



Franklin Gothic :

typogra

Franklin Gothic and its related faces are a large family of realist sanses developed by the type foundry American Type Founders (ATF) and credit designer Morris Fuller Benton. "Gothic" was a contemporary term (now little to describe period designs) meaning sans-serif.

Franklin Gothic has been used in many advertisements and headlines in America. The typeface continues to maintain a high profile, appearing in a variety of contexts from books to billboards. Despite a period of eclipse in the 1930s, after the introduction of European faces like Kabel and Futura, they were re-discovered by Americans in the 1940s and have remained popular ever since. Benton's Franklin Gothic is a family of solid designs, particularly suitable for display and trade use such as headlines, but also for extended text. Many versions and adaptations have been made since.



Morris Fuller Benton

PRETENDER :

TYPOG

PRETENDER IS A NARROW ART DECO HEADLINE FONT INSPIRED BY THE SHEET METAL TYPE OF THE EARLY 20TH CENTURY WALTZ BALLAD, MEDICAL ROSE.



TYPOGRAPHIC FONTS

LUCity - LUCITY

LY



**SANTA MARIA D
MONSENHOR ENVIDE I
08.12.2018**

EFELIBAT

MERCA

LUCity - lucity



**SANTA MARIA DA
MONSENHOR ENVIDE NE
08.12.2018**

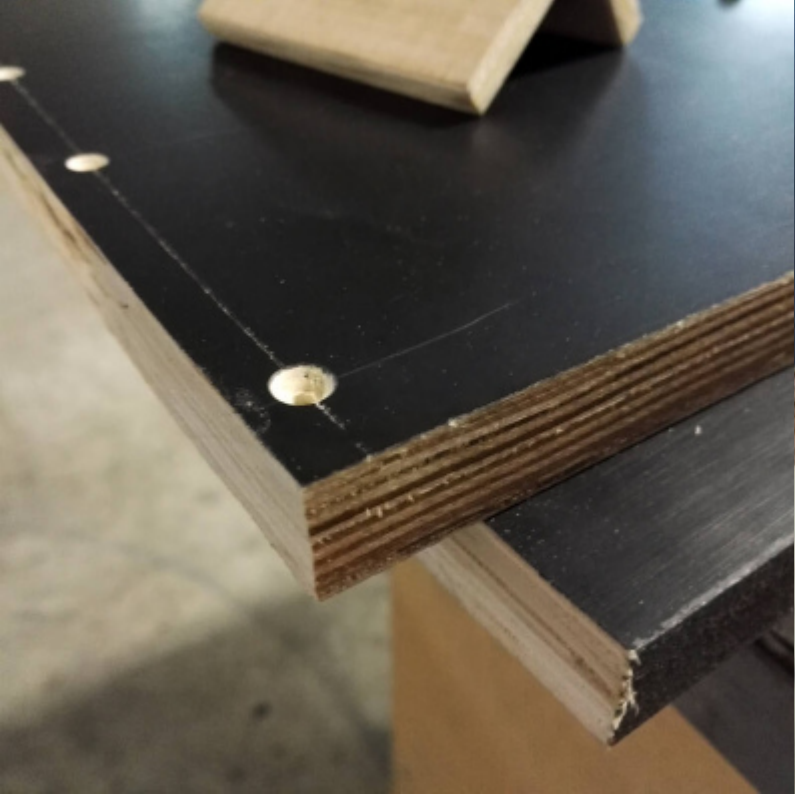
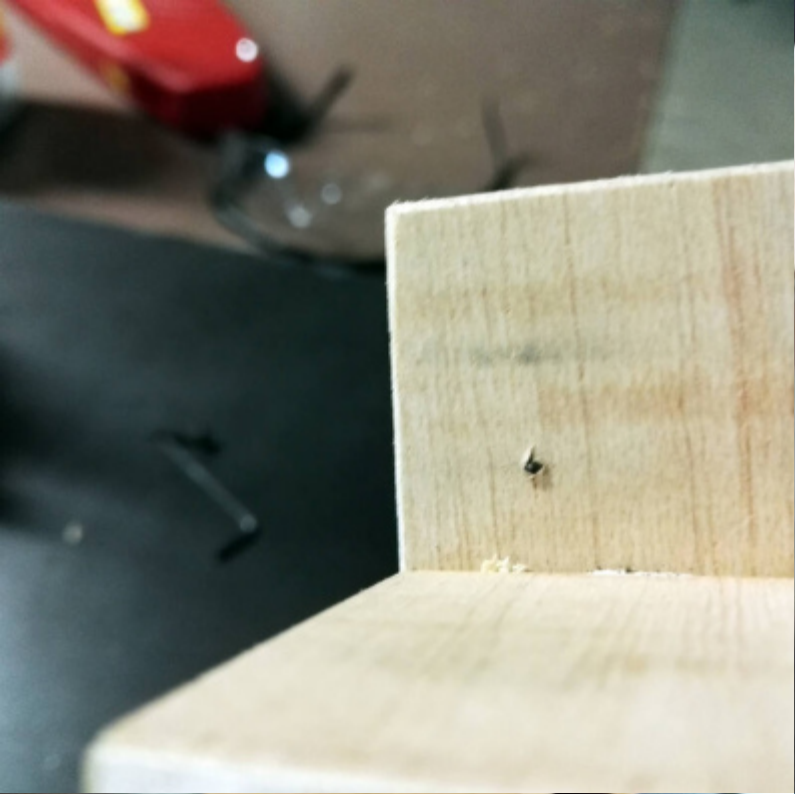
MERCAD

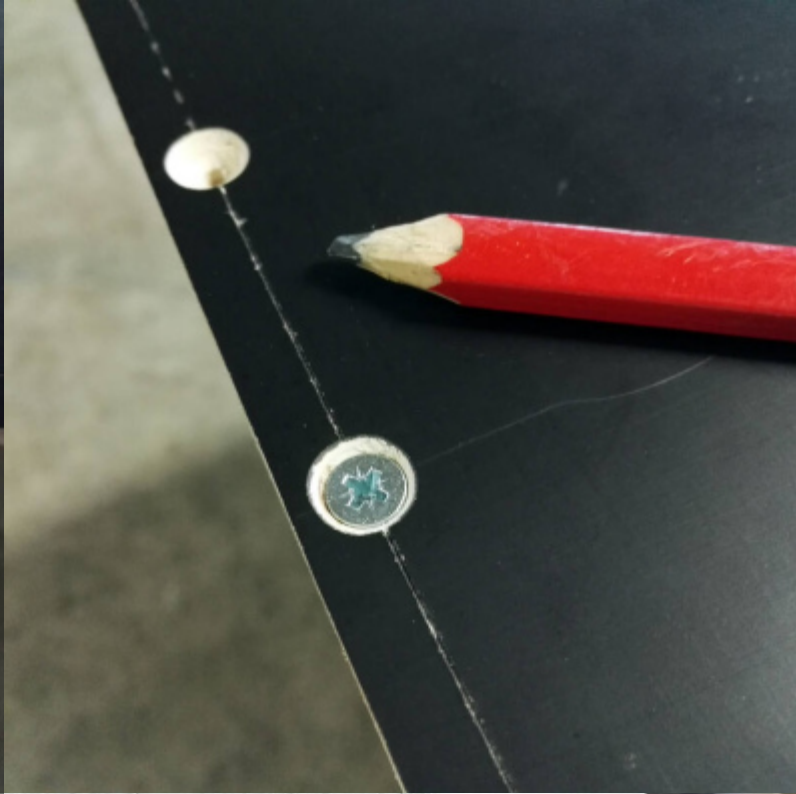
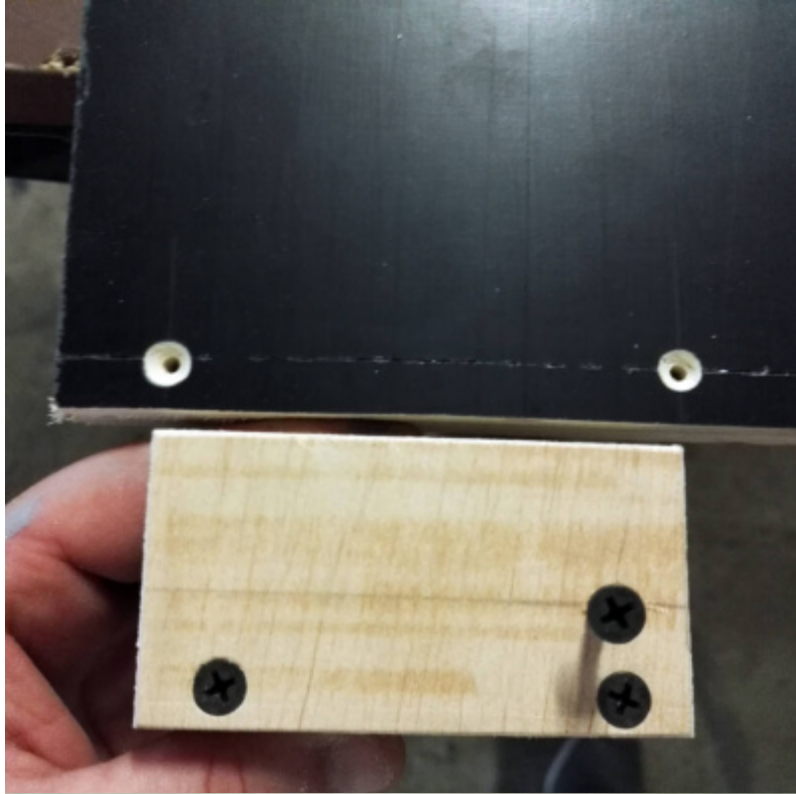
EFELIBAT

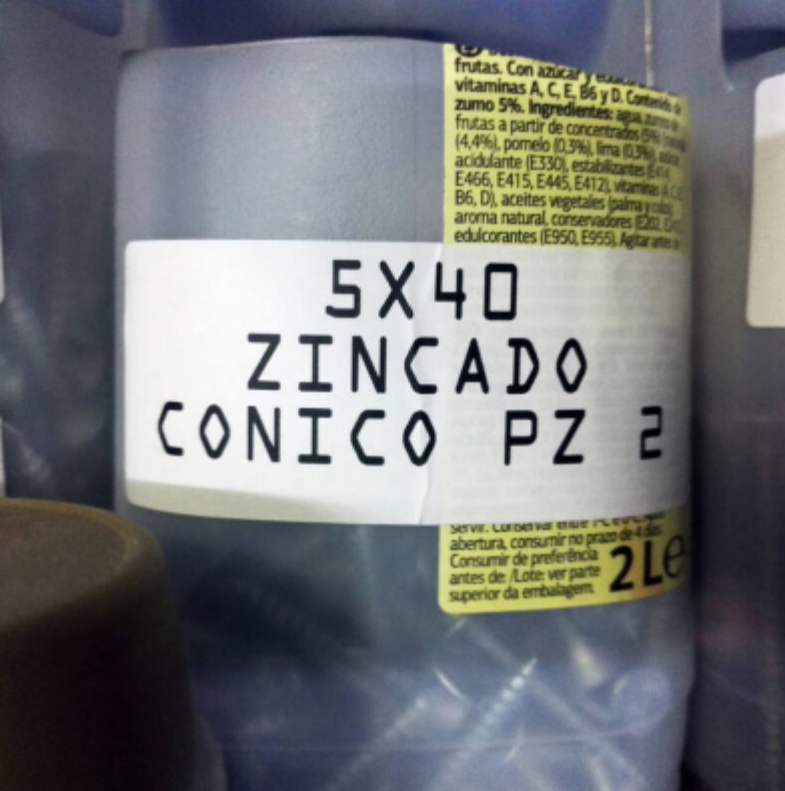
LUCity - lucity



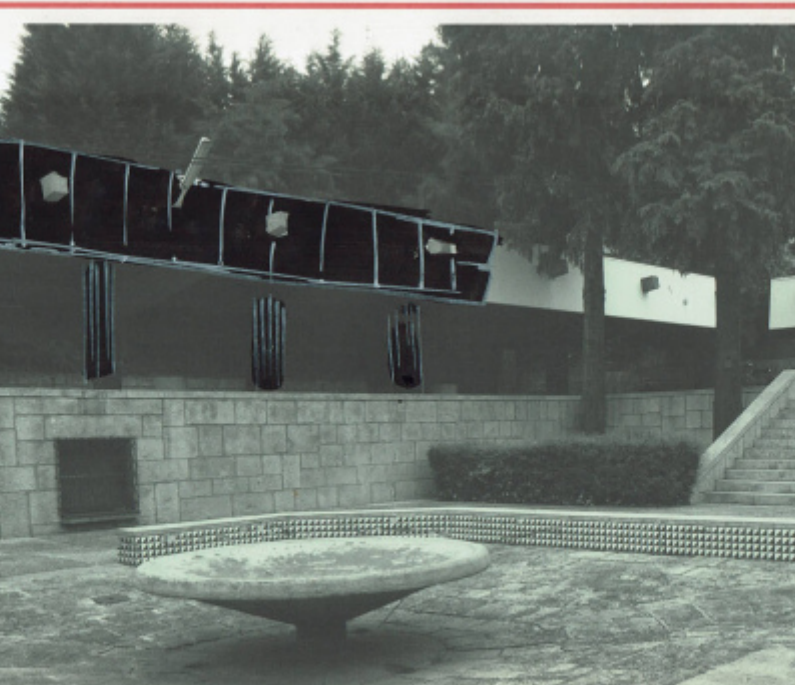
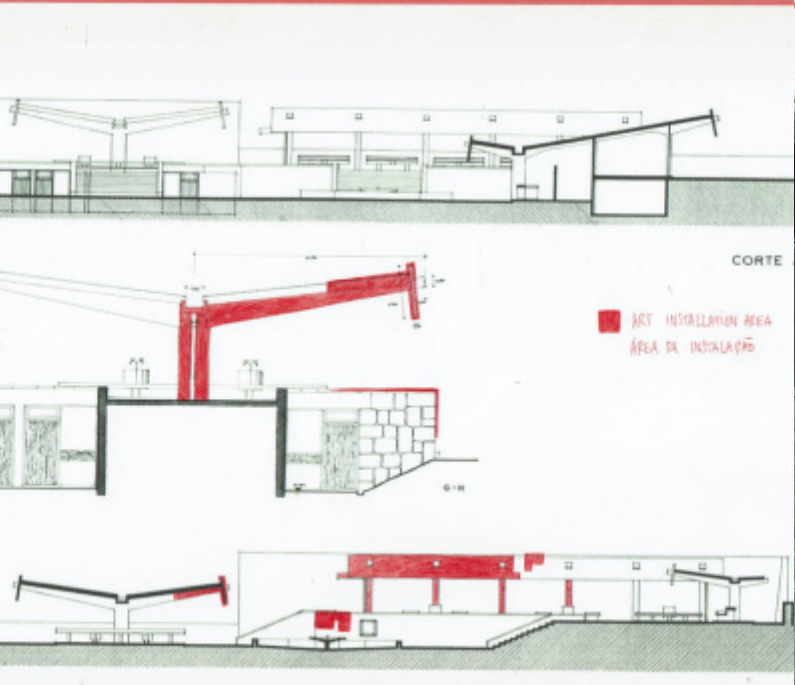
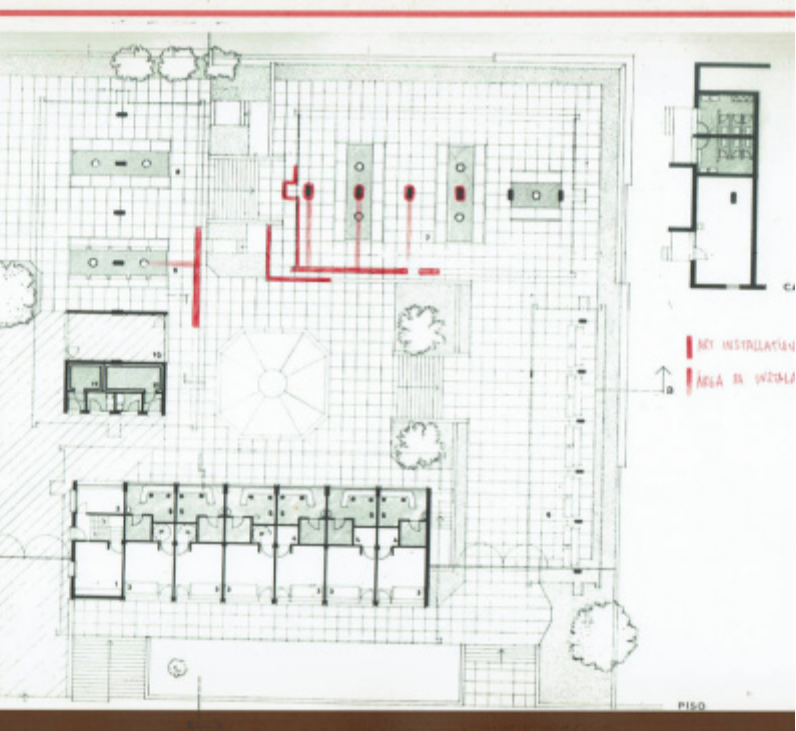
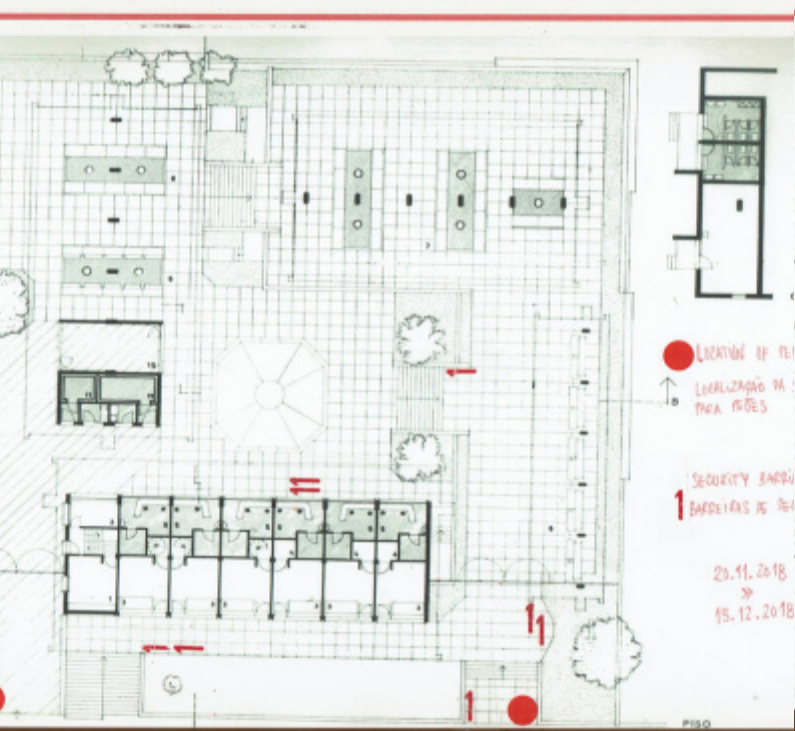


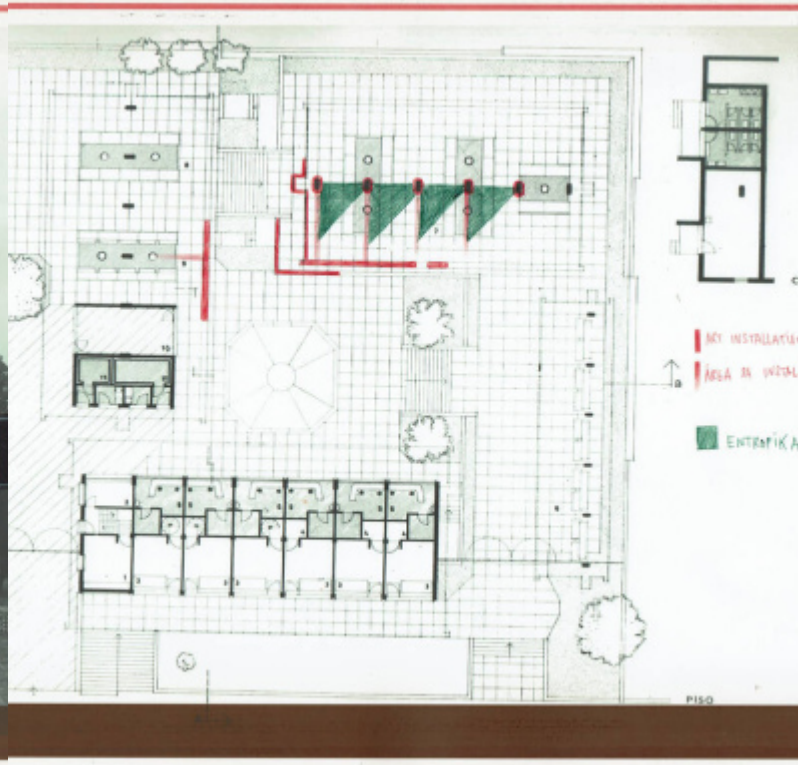
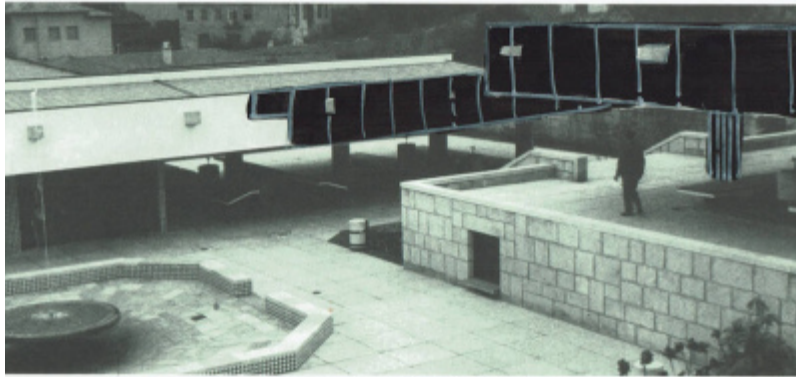


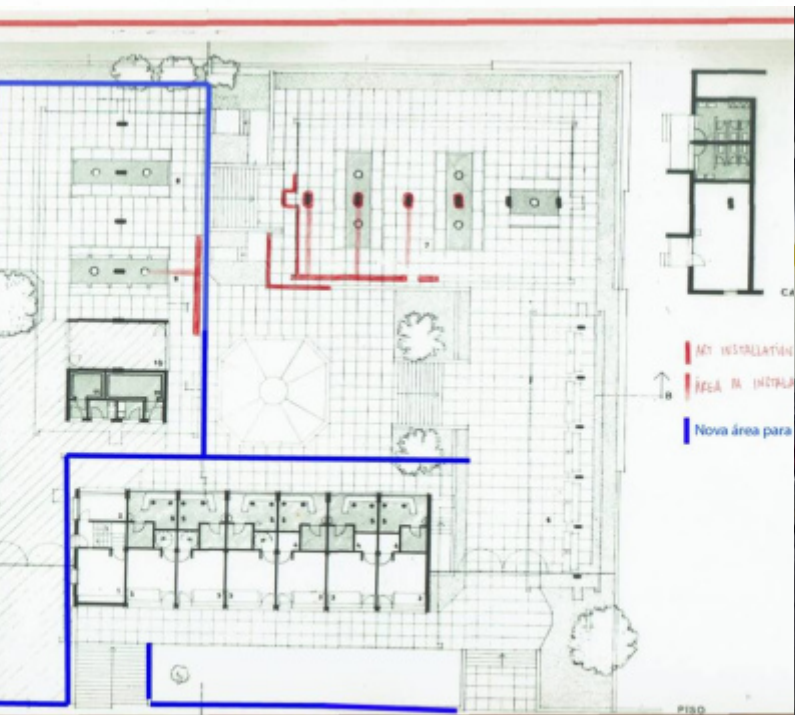
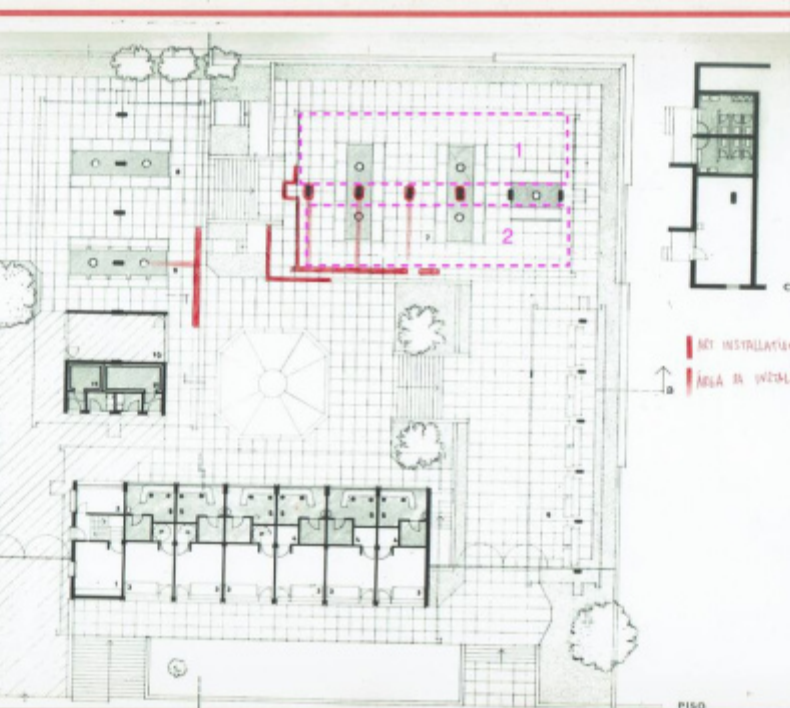
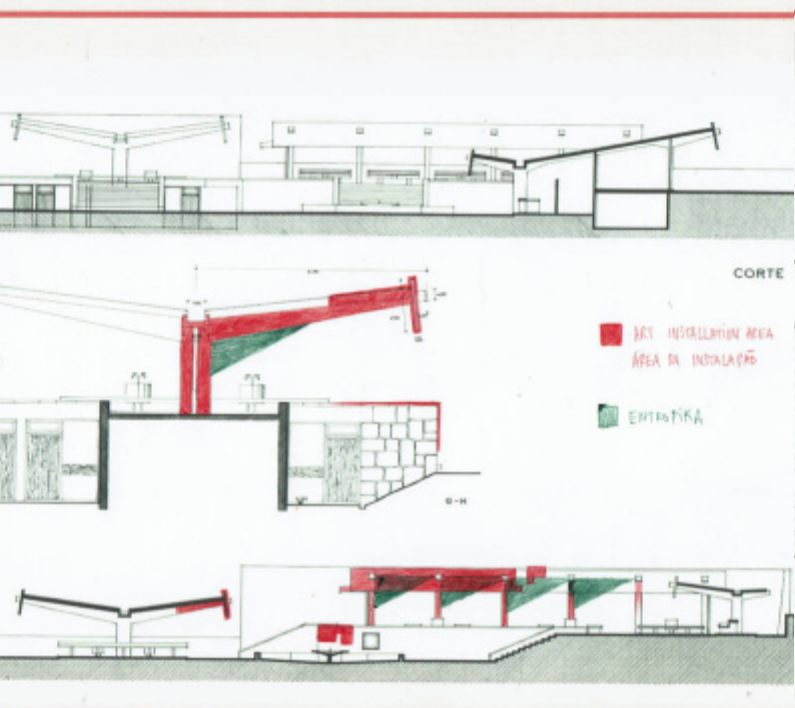


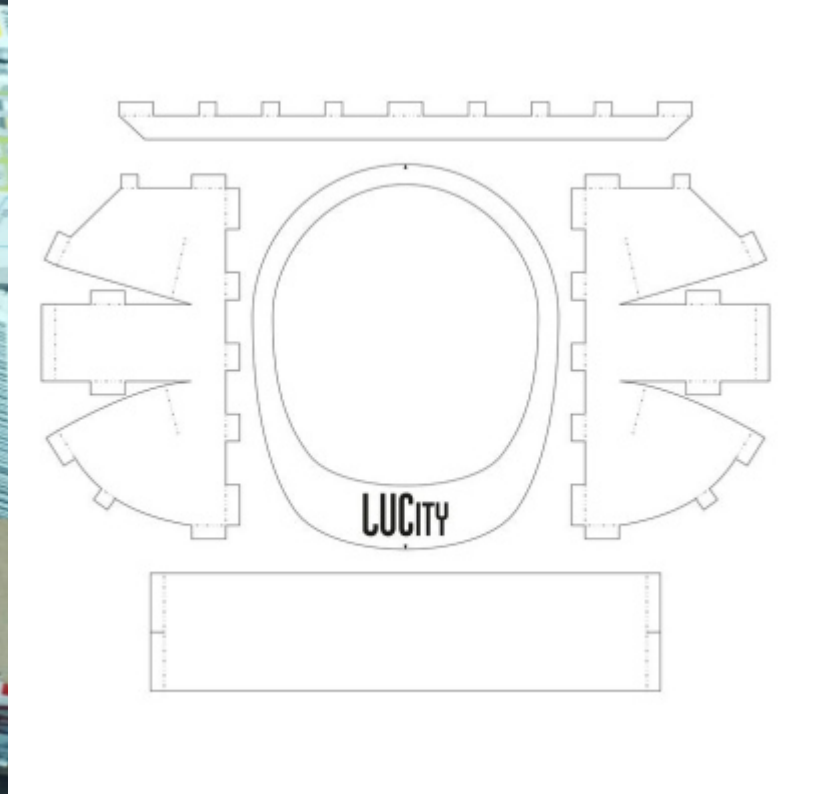






























Lu City! Feira

📍 Mercado Municipal Fernando Távora


Apresentação Emocional — 17 Nov

Story telling para paisagens fotográficas
L 24 e 25 Nov / 1 e 2 Dez.

cenografia com envide neFelibata &
ENTROPIKA LAB — 25 a 31 Nov.
— 3 a 8 Dez.

ção com coletivo

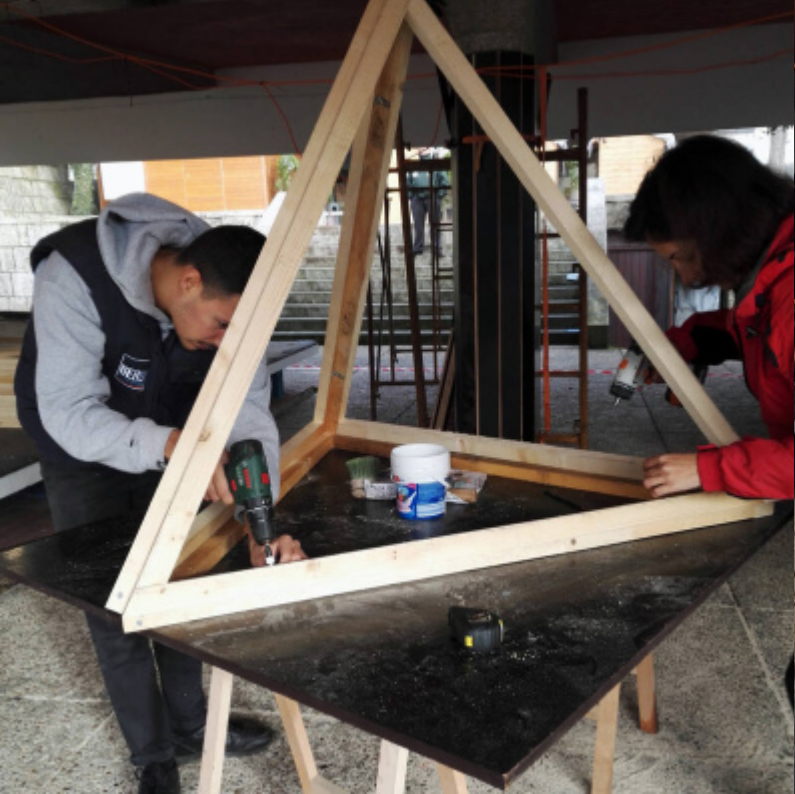
4 is emcional
12/11/18
EMOSGES
FRÁGIL





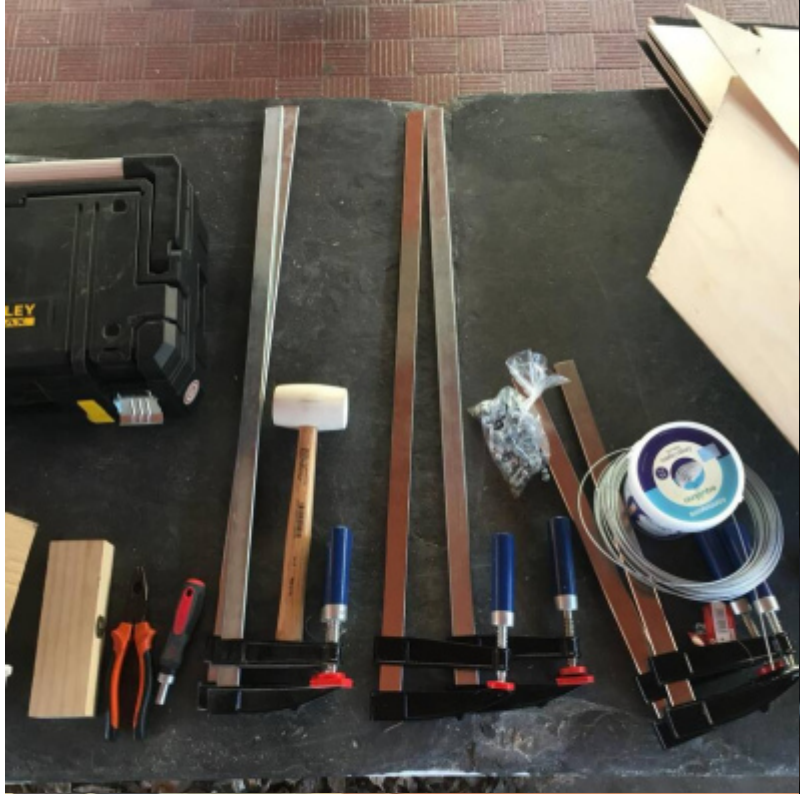




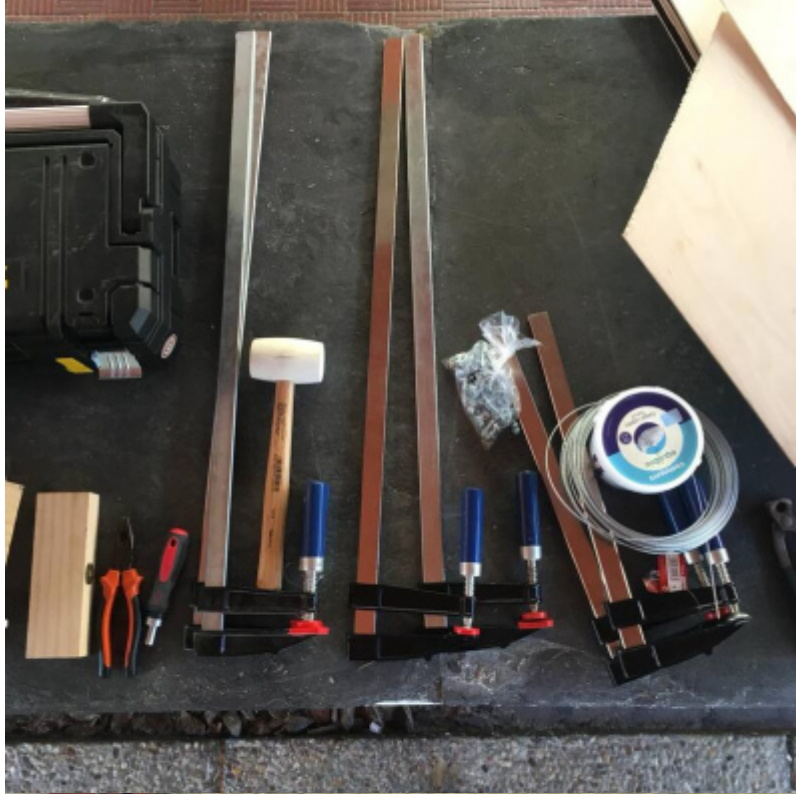




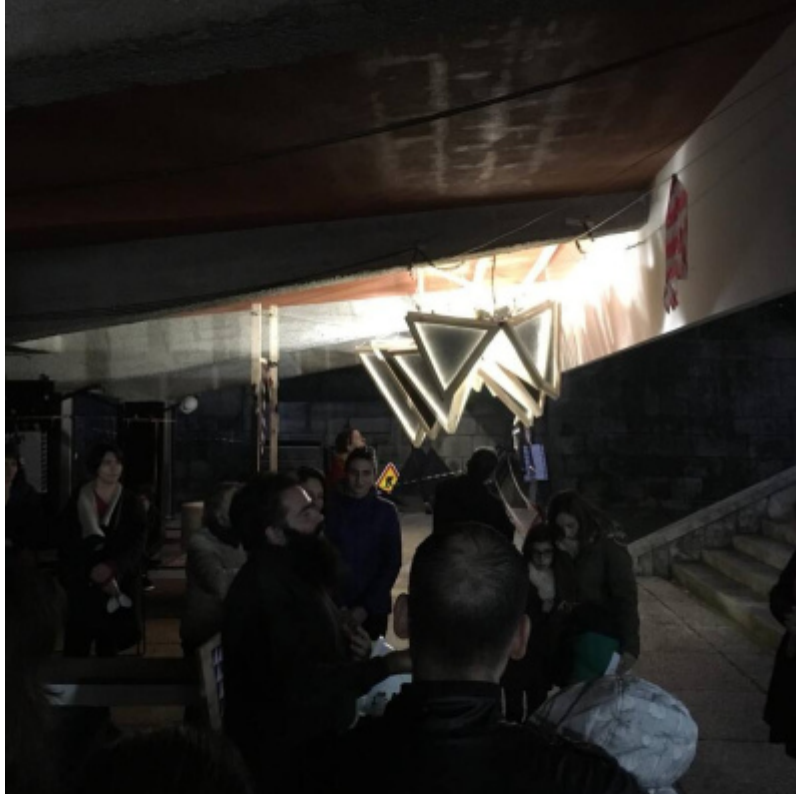
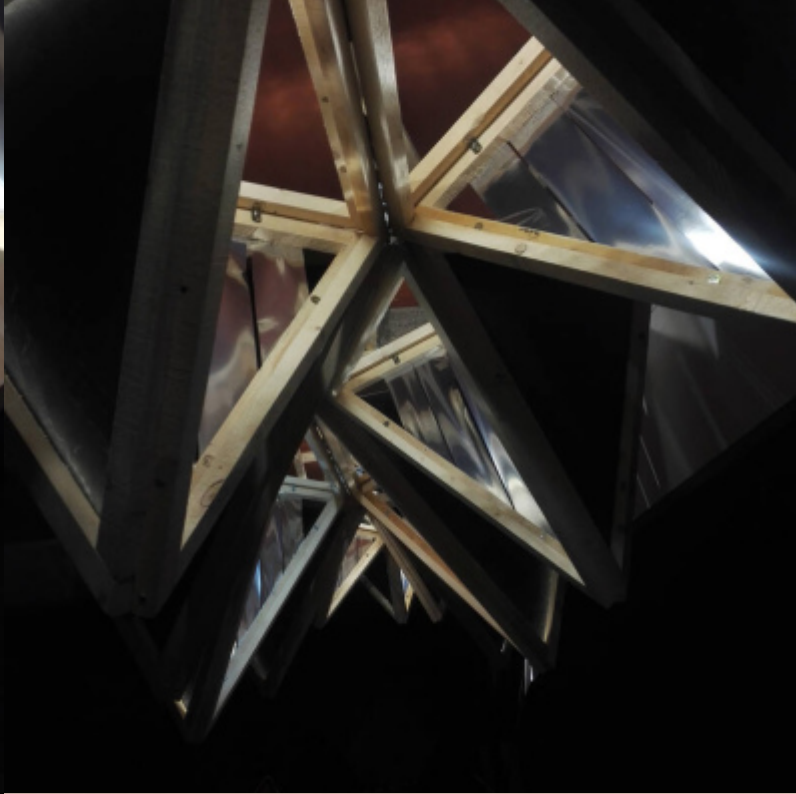
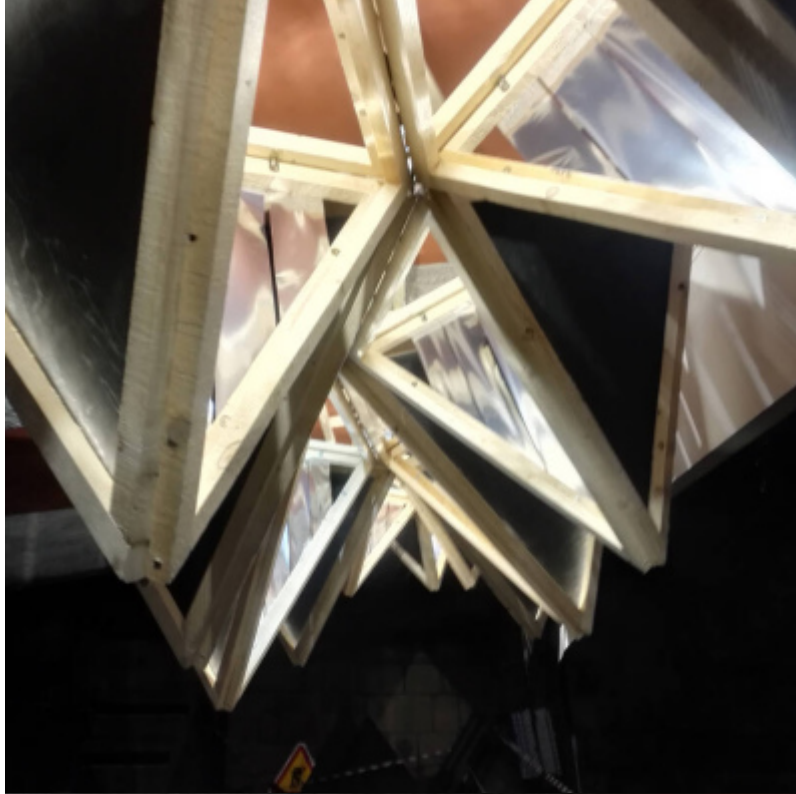










































































































































LUCity! Santa Maria da Feira

Instalação LUCity! é fruto da cooperação entre o Centro de Estudos e Desenvolvimento de Santa Maria da Feira e o Laboratório Interdisciplinar de Estudos Artísticos e Culturais.

A criação apresenta duas abordagens ao espaço do Mercado que se complementam na forma de instalação artística luminosa. Movimento explora a scintila e o interplay abstrato a luz, dois aspetos intrinsecamente ligados. De relevo rítmico, Movimento explora a scintila e o interplay abstrato a luz, dois aspetos intrinsecamente ligados. De relevo rítmico, Movimento explora a scintila e o interplay abstrato a luz, dois aspetos intrinsecamente ligados.

O caráter de rede, superficial do edifício, revela-nos o volume que o reveste e nos dá a sensação de um espaço a ser descoberto e explorado. A instalação é feita de modo a ser descoberta e explorada. A instalação é feita de modo a ser descoberta e explorada.

Todo o seu processo de criação foi elaborado numa performance visual que culmina numa obra ambiente de "estabilização de luz", apresentando cada vez que nos alerta para a urgência da intervenção dos intervenientes envolvidos que participam a todos os níveis.

Finalmente, surge a qualidade da obra.

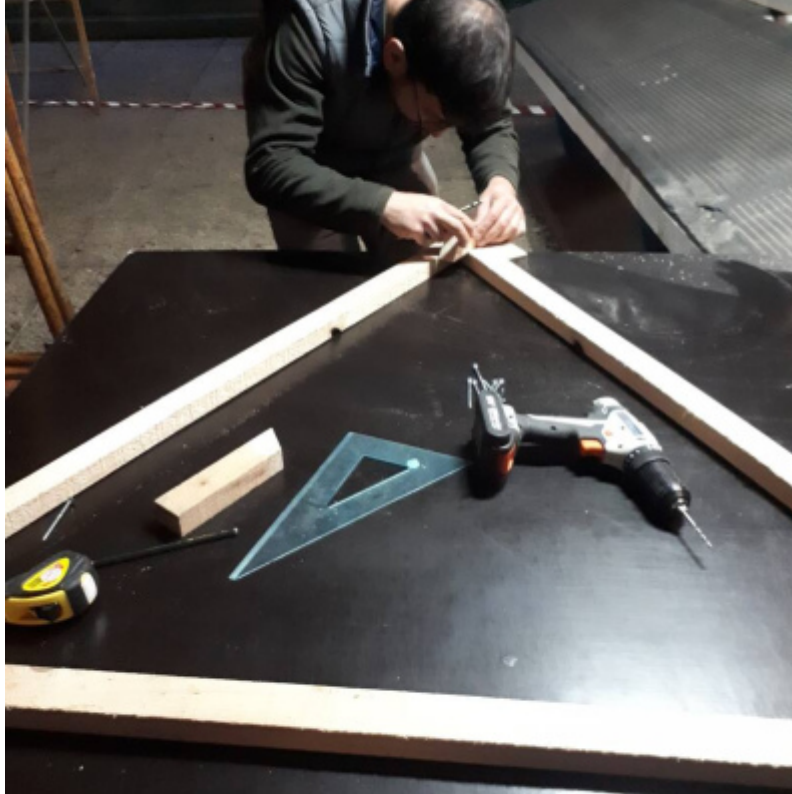








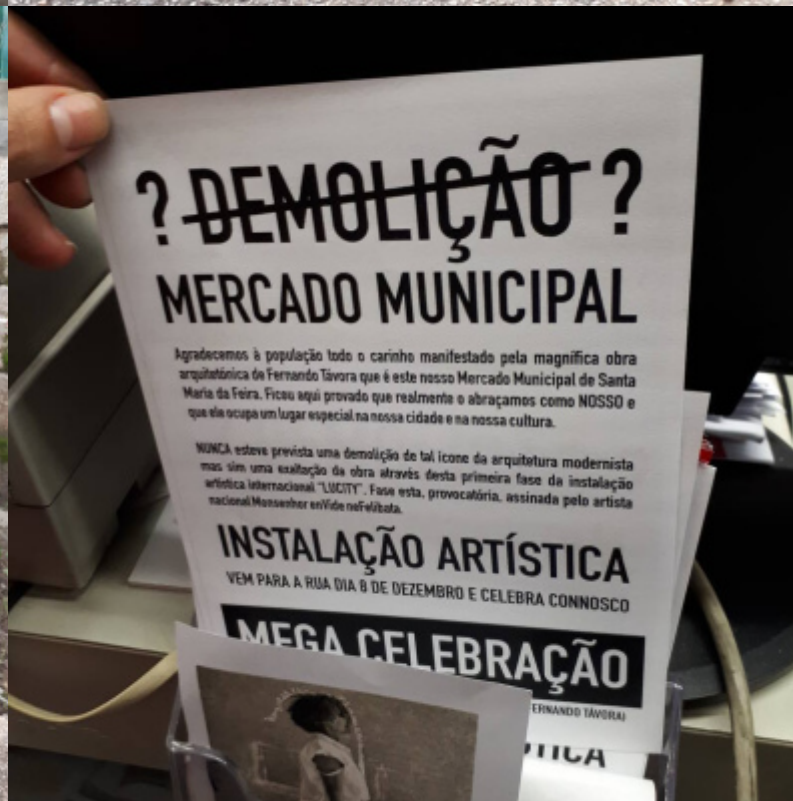














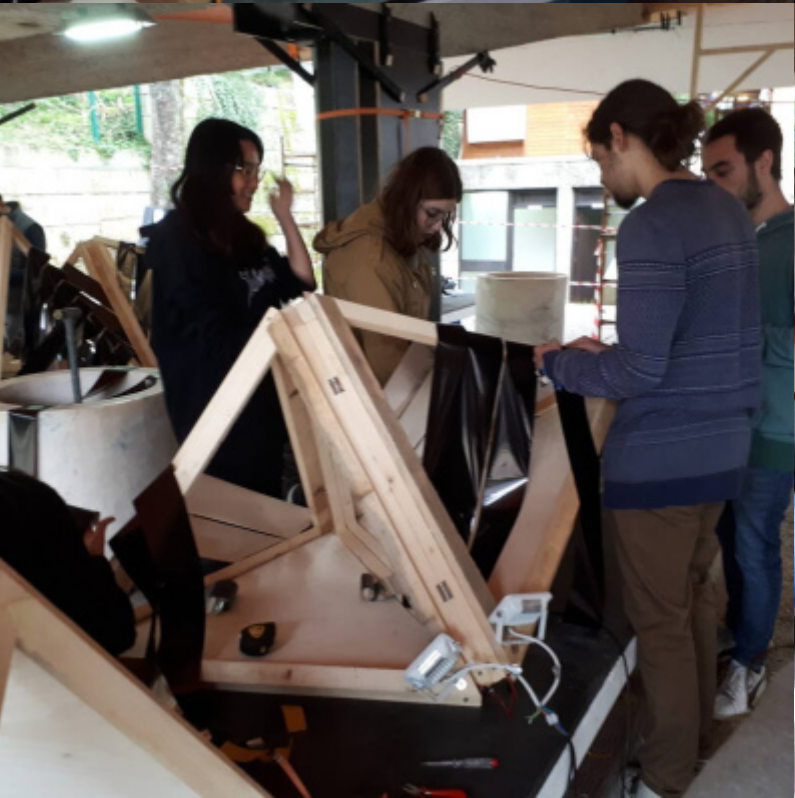
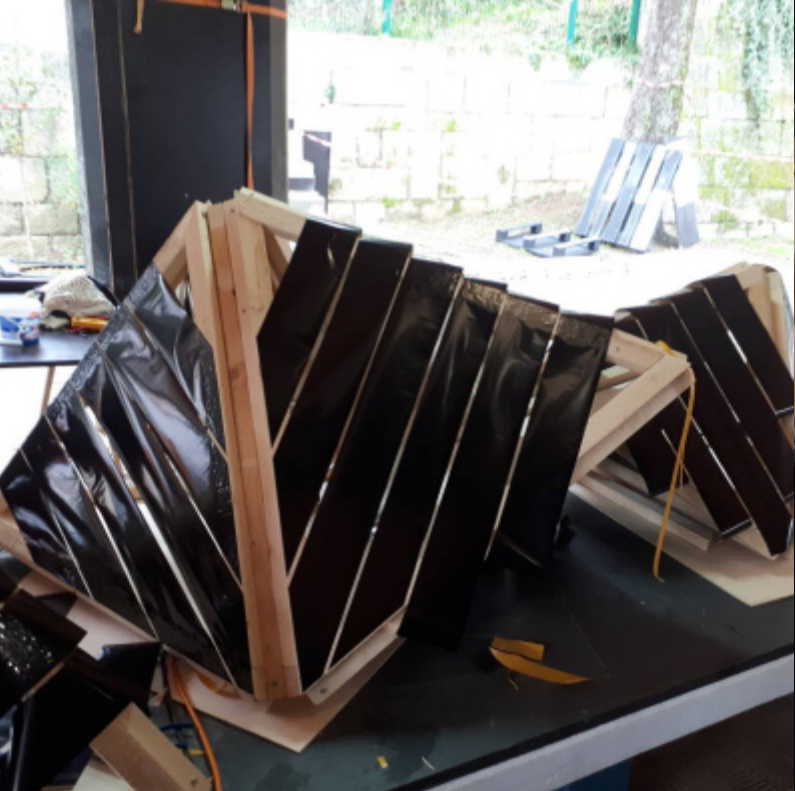


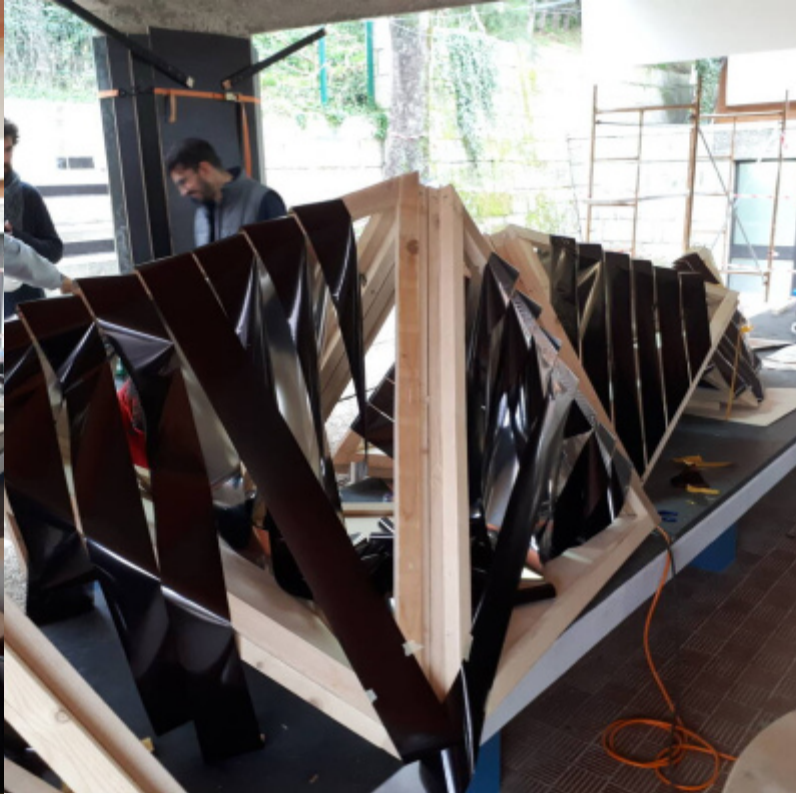
















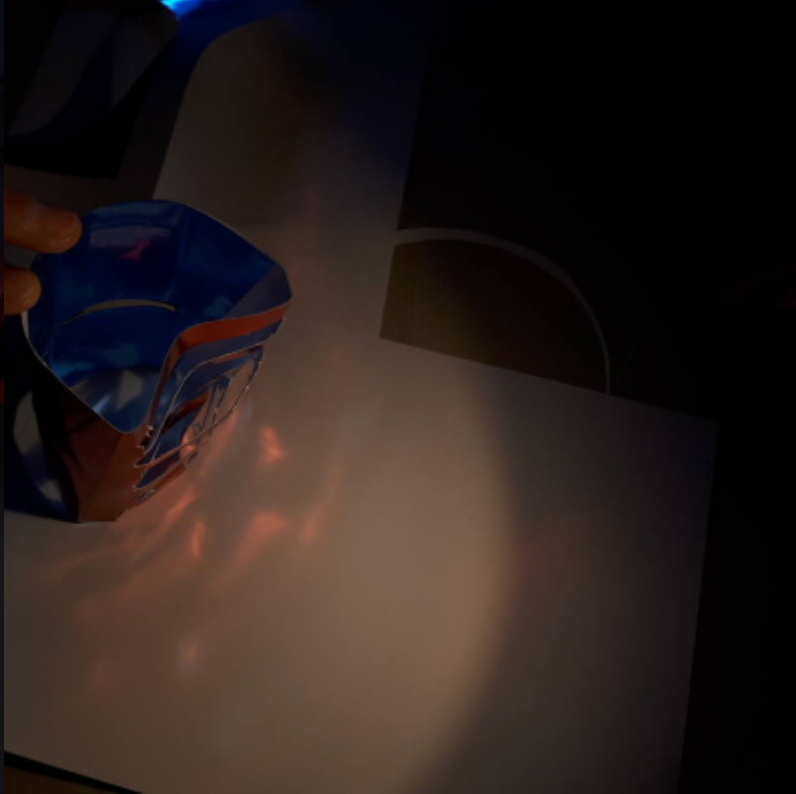
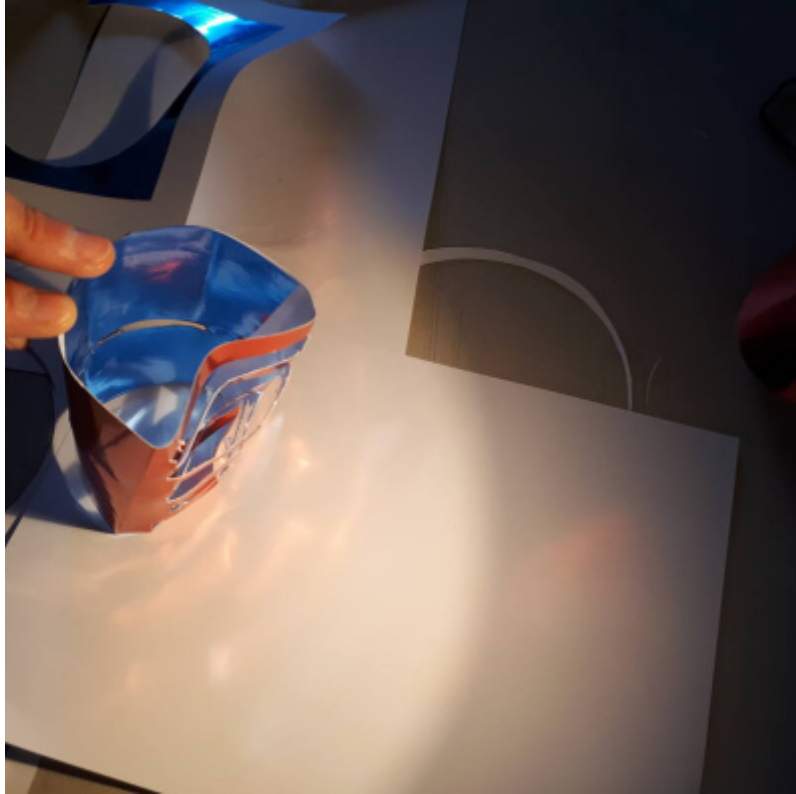
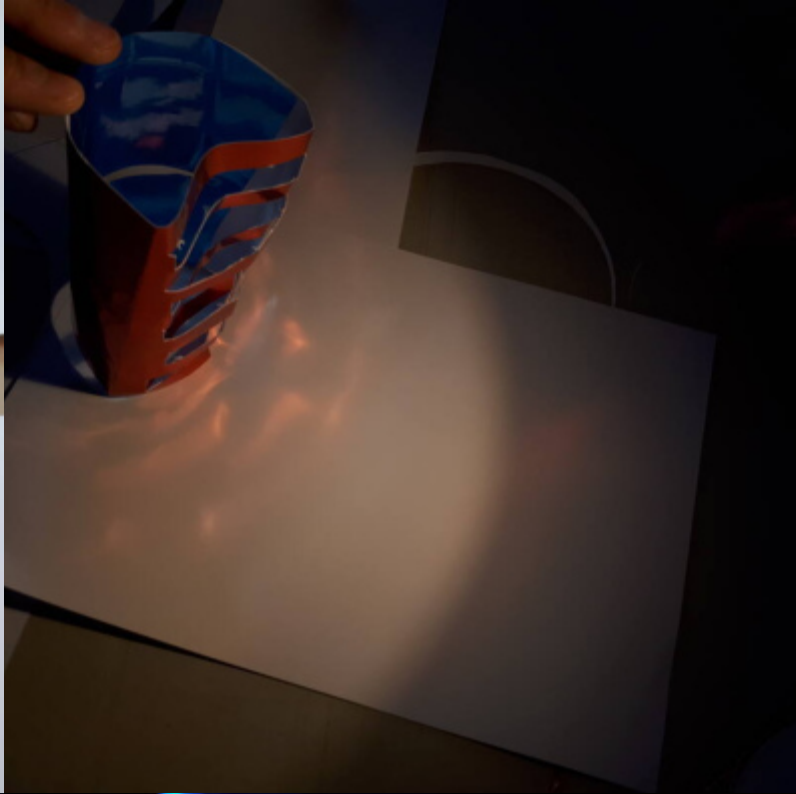


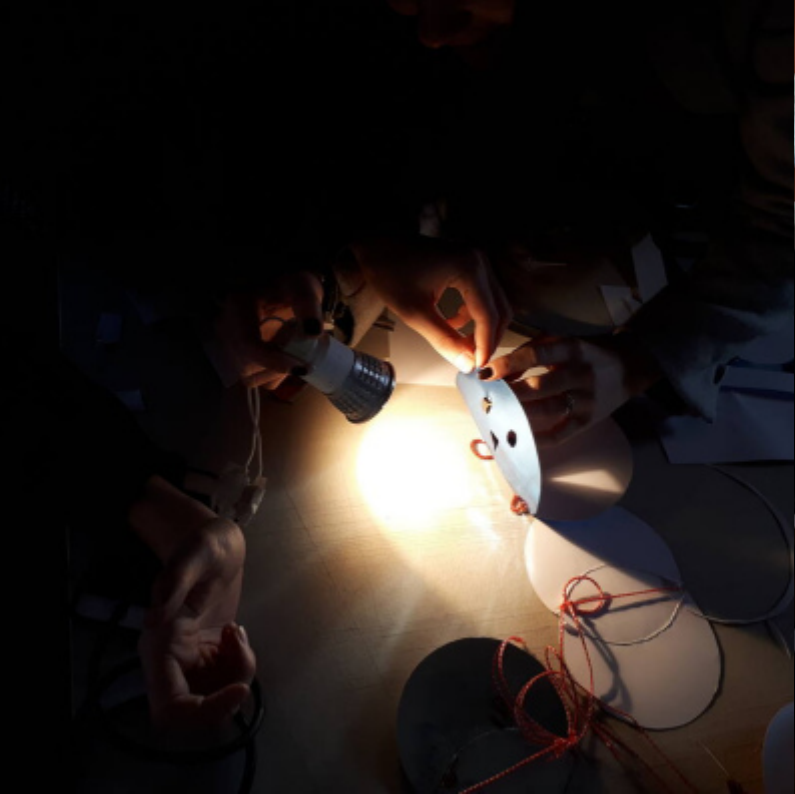
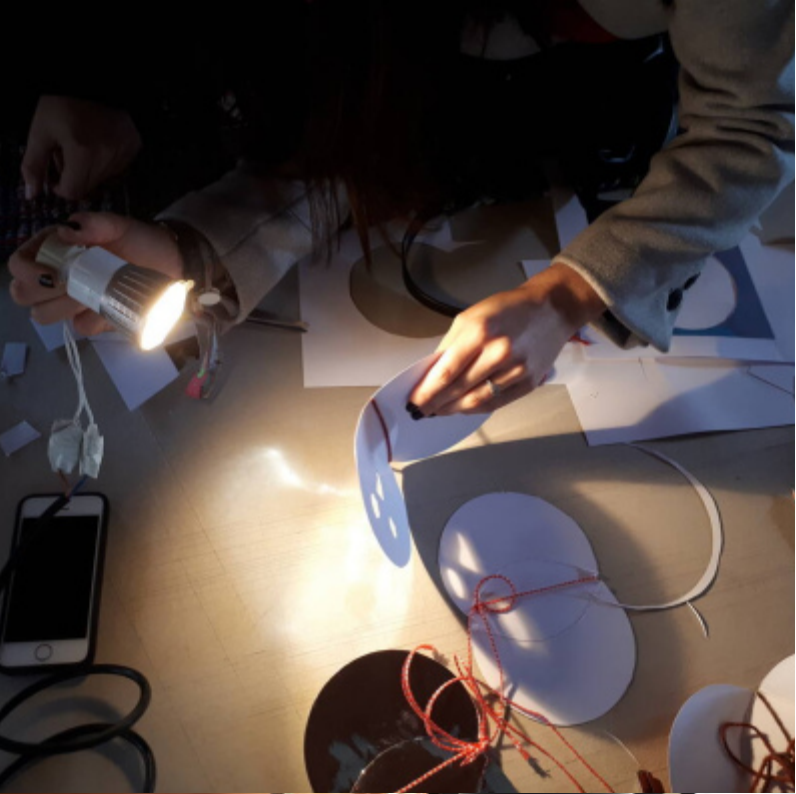
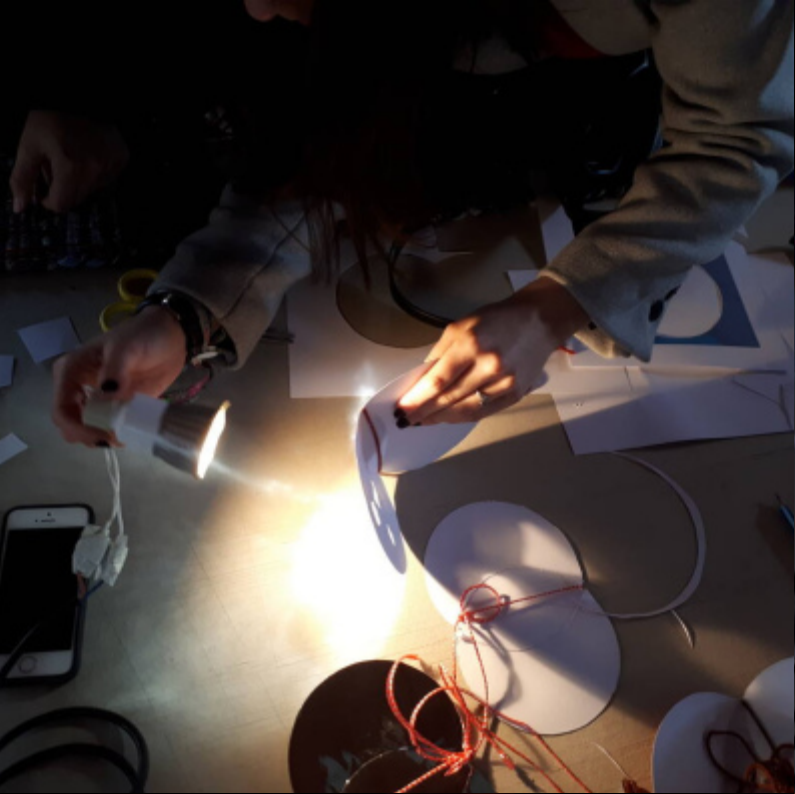


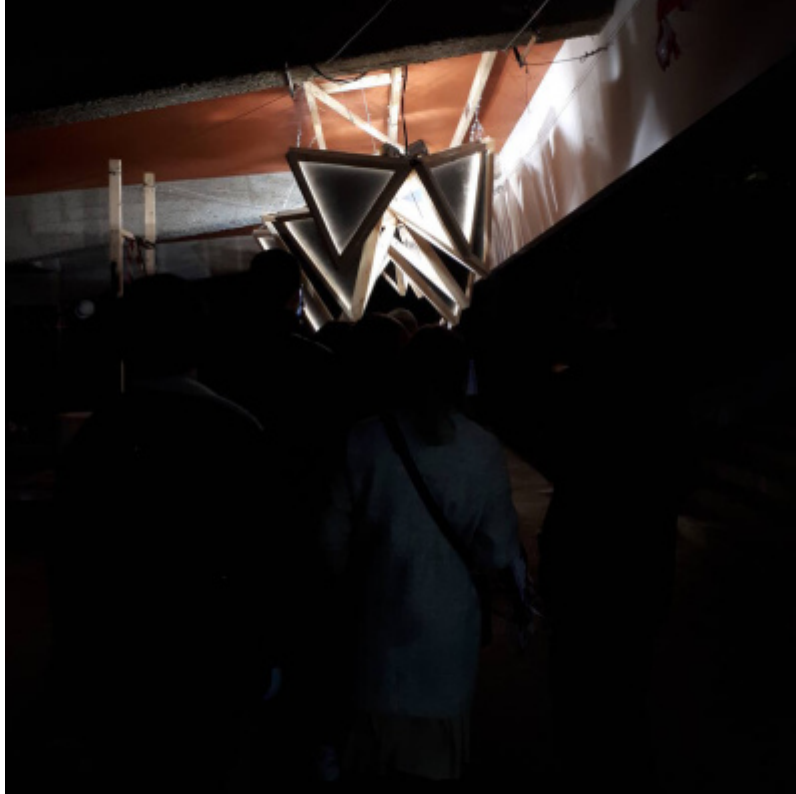






















SHOWN AT

2018

MERCADO MUNICIPAL DE SANTA MARIA DA FEIRA
Santa Maria da Feira, Portugal

www.youtube.com/watch?v=TQzkwY_4BiM

www.evidenefelibata.com

www.vimeo.com/evidenefelibata

www.MailArt.pt

www.YZONK.com

#yzonk

@yzonk_com

www.paypal.me/YZONK