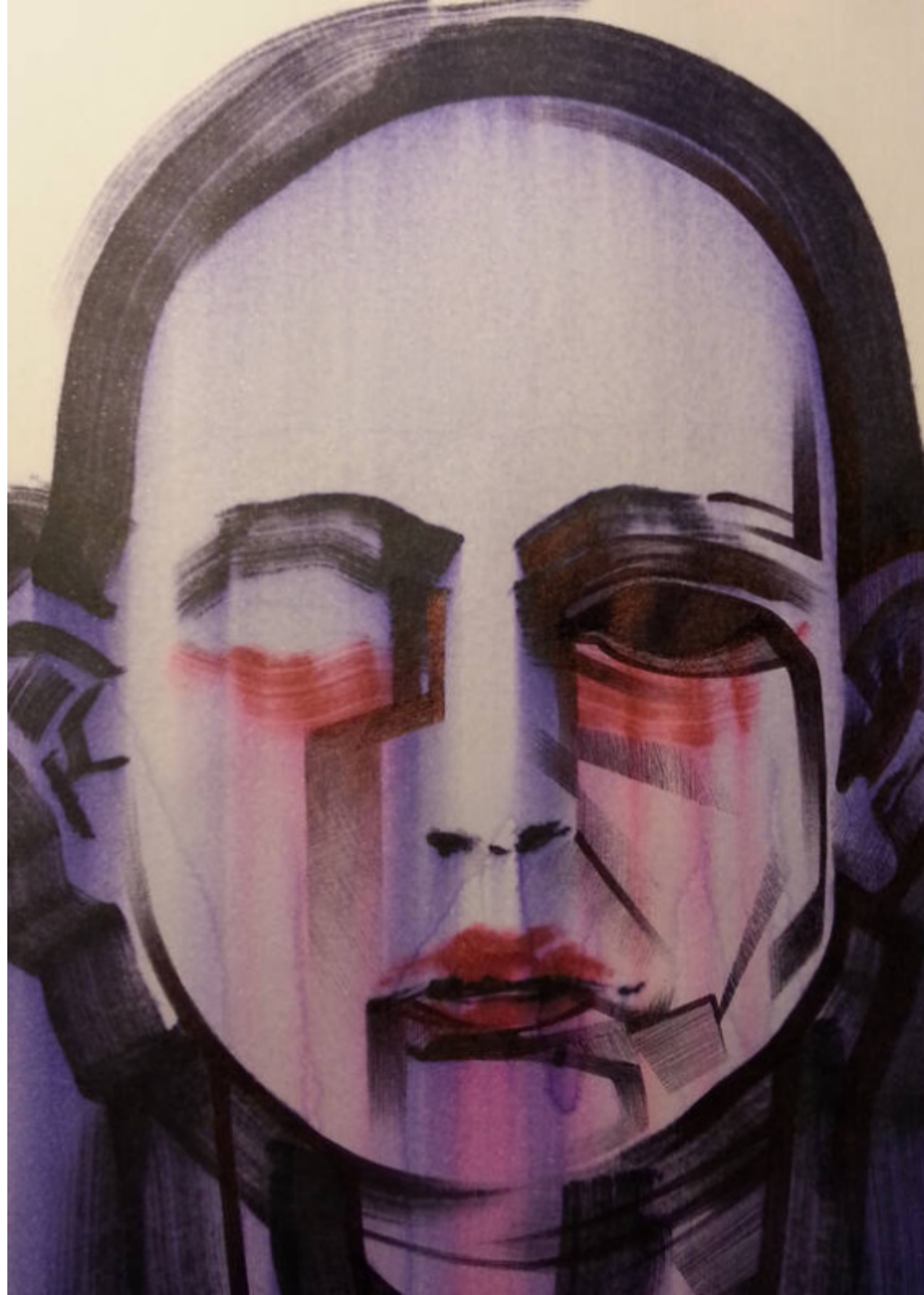


Faces of Deception

esferográfica, marcadores e laca sobre papel
Discovery 110gr / 210 x 297 mm
2015/16



SOBRE

"Faces of Deception" surge em continuidade da coleção criada no ano antecedente e intitulada "N'oz upcycle".

N'oz aborda o retrato como conceito e não como gênero e é realizado do modo que considero preferível, ou seja, ao vivo e usando amigos íntimos como modelo. Já "Faces of Deception", de forma similar, aborda agora o auto-retrato.







Monsenhor enVide neFelibata





Monsenhor enVide neFelibata



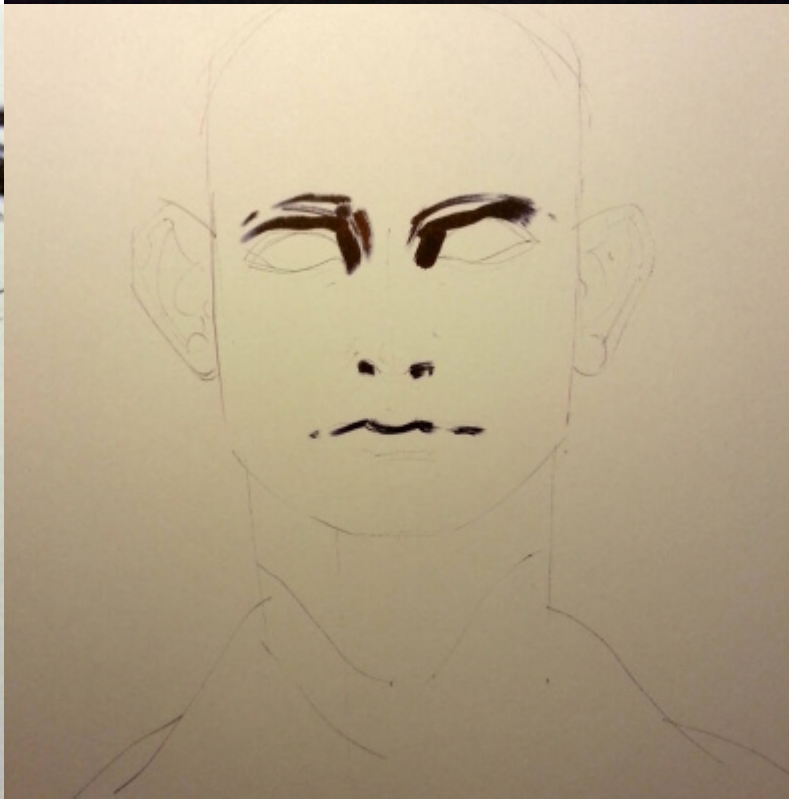
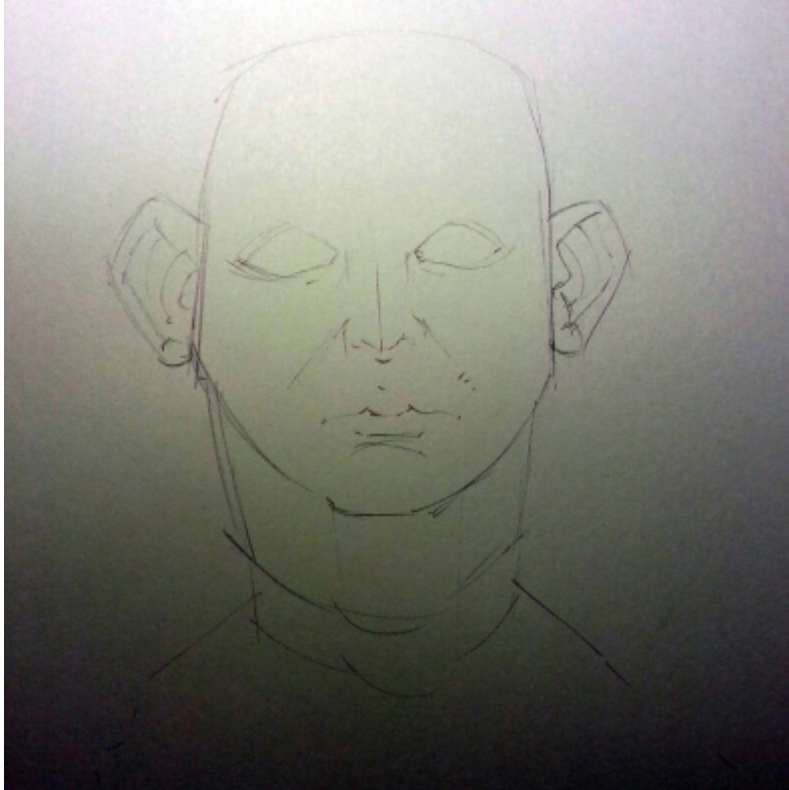


FACES OF DECEPTION



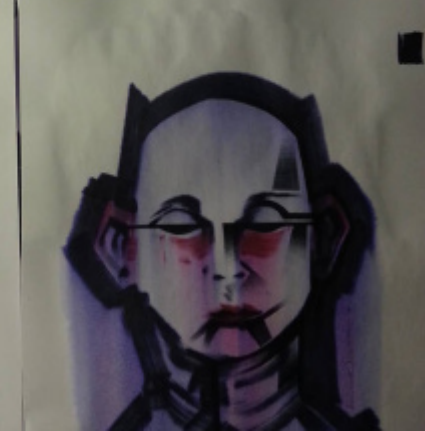
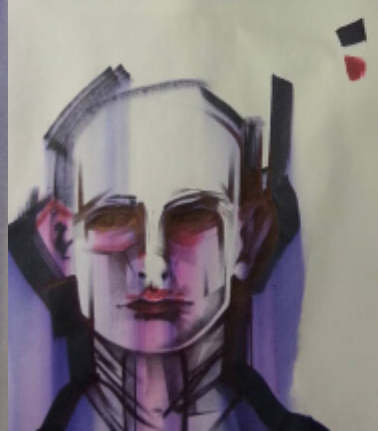
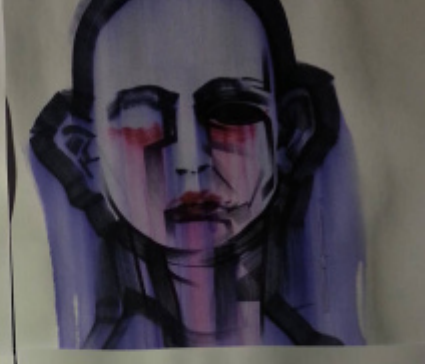
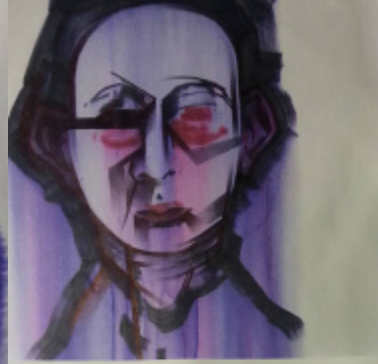
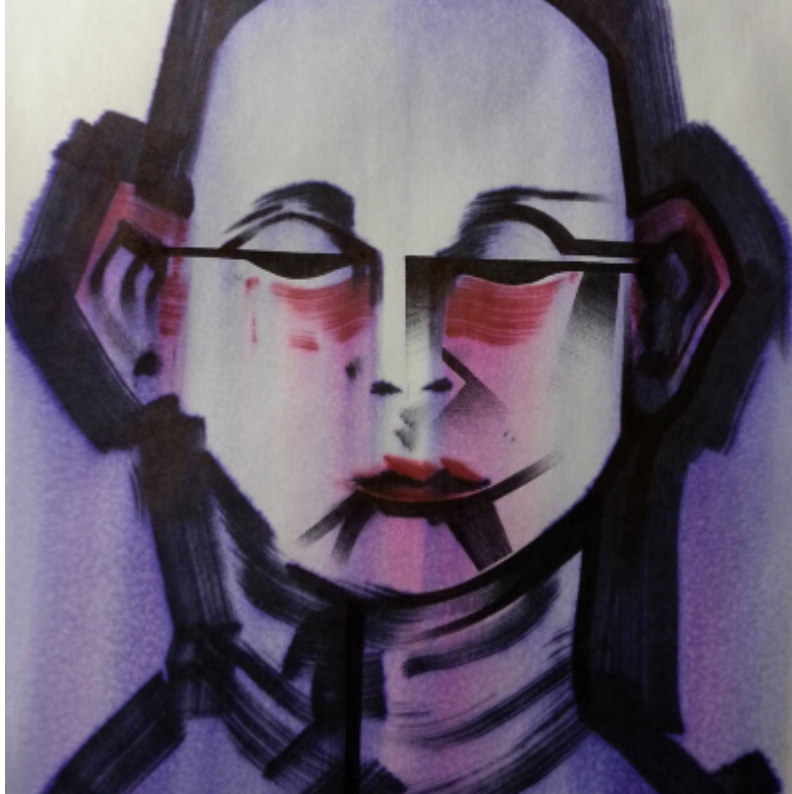
30 OCT 2016

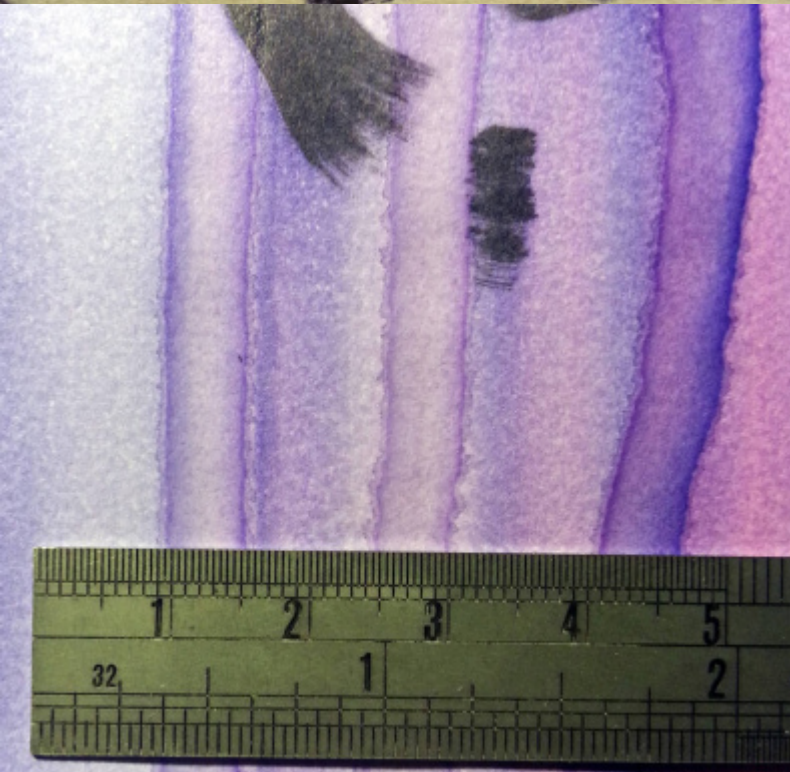
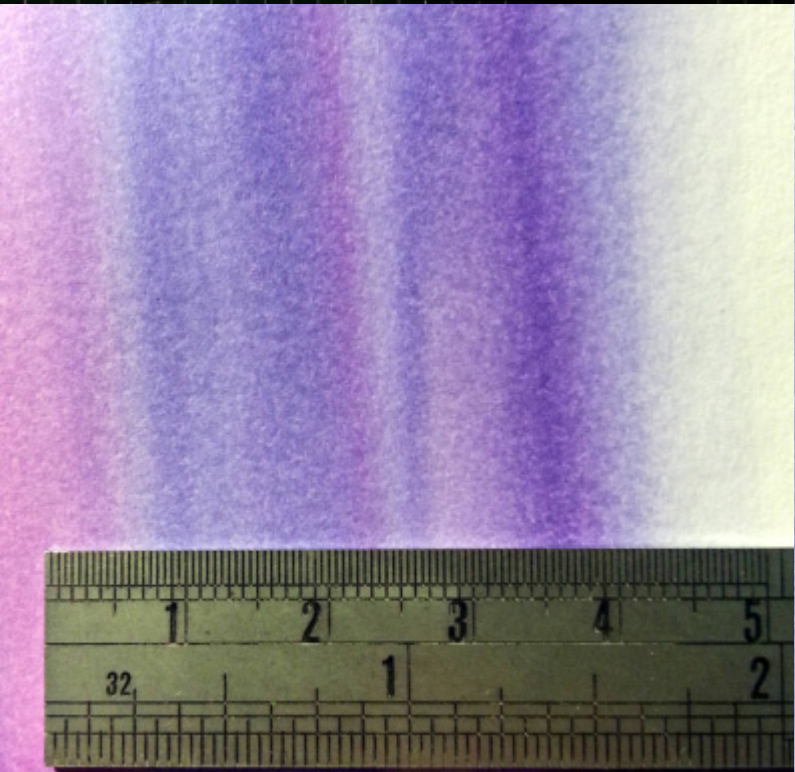
GALERIA

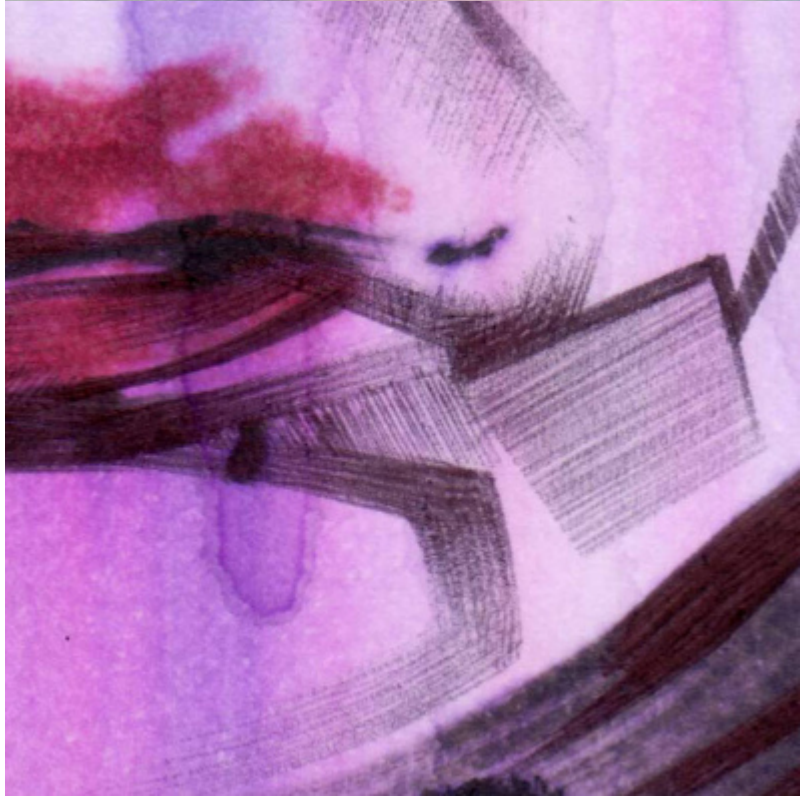
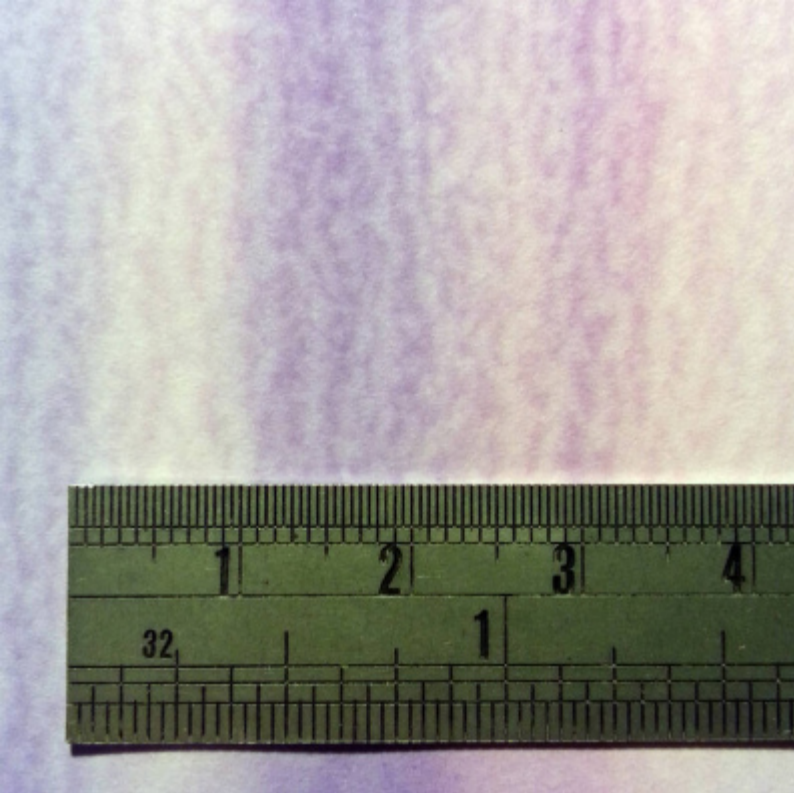
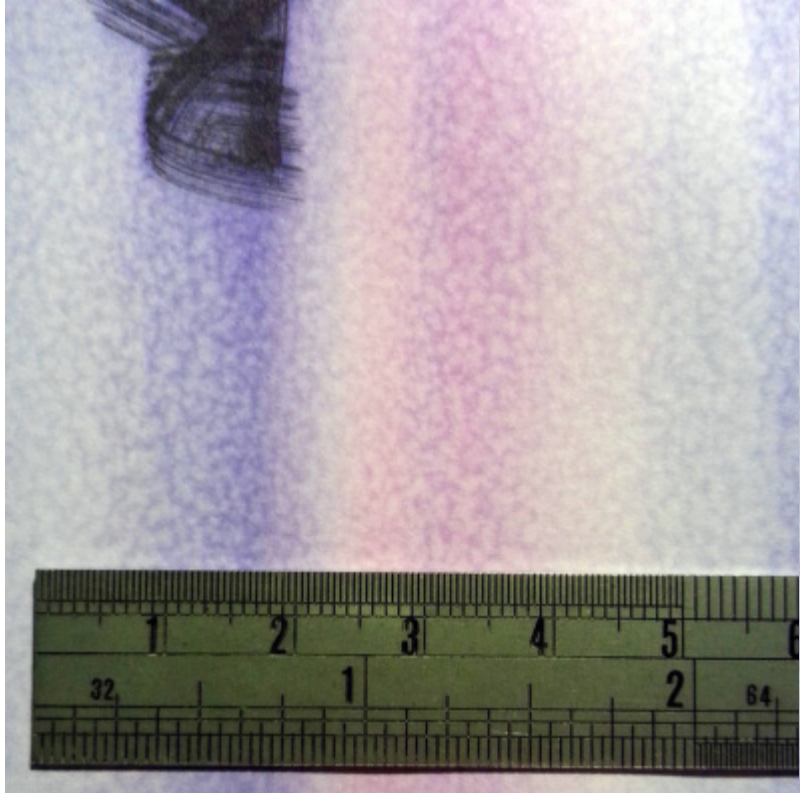












HISTÓRICO

2016

"Arven etter Kittelsen" / Kittelsenhuset / Kragero, Norway

